

Historic, Archive Document

Do not assume content reflects current scientific knowledge, policies, or practices.

6209



SOUVENIR (See Page 8)

SUNNY SLOPE 'MUM GARDENS
SAN GABRIEL, CALIFORNIA
1943

To Our Patrons

Thank you for your loyal support during this past year. We wish to inform you that the Sunnyslope 'Mum Gardens and the Blanchard Chrysanthemum Gardens have merged and are being operated under the trade name of Sunny Slope 'Mum Gardens and the management of the Blanchard Chrysanthemum Gardens. We will endeavor to supply none but strictly first-class rooted cuttings taken from strong, healthy field grown stock so that we may further merit your confidence and patronage. We hope that throughout these pages you will find listed many novelties in Chrysanthemums, any of which will without question lend added splendor to your fall garden. You are cordially invited to visit our gardens at any time.

SUNNY SLOPE 'MUM GARDENS

TERMS OF SALE

Important—Read Carefully Before Ordering

Quotations: The prices quoted are as low as can be made for strictly first-class stock and are for U. S. Currency. 3% sales tax must be added for all deliveries made in the State of California. This list cancels all previous quotations.

Time of Our Shipments: Chrysanthemum plants are available from April 1st to July 1st inclusive.

Filing Orders: All orders are filled in strict rotation, carefully labeled, lightly and securely packed, and delivered to the carriers in good condition. In case stock of certain varieties is exhausted, we reserve the right to decline the order. To partially avoid such action, place your order early, so that the plants may be set aside. Assist in prompt delivery by using order sheet.

Owing to the increased cost of packing materials and labor, we are compelled to make a charge of 25 cents for packing any order of less than \$1.00.

Shipments: Due to the increasingly heavy loads carried by the Post Office Department, we suggest that whenever possible the shipment be made by Railway Express, thus insuring a more prompt delivery and less likelihood of damage through delayed transit. If plants are to be shipped by Parcel Post add cost of postage, as all prices quoted are F.O.B. San Gabriel, California. As a basis for computing weight use 12 ounces for each 12 plants, packing included. Your Post Office will furnish postal rates upon request.

Claims for Damage: All claims for damage must be assumed and entered against the carrier by the buyer. Inasmuch as we have no control over the transportation agencies, we cannot be responsible for plants damaged in transit by either extremes in temperature or injuries due to delayed deliveries or rough handling.

No Guarantee: While we exercise utmost care in executing all orders to keep our stock true to name, we give no warranty, expressed or implied, and cannot guarantee or be in any way responsible for the crop, either as to variety or product. . . . ALL ORDERS are accepted on the above terms and are not subject to return.

Feather and Spidery Varieties

Recent Introductions and Blanchard Gardens Seedlings

BERTHA OLIVER (B. G. Seedling, 1943)—A deep pink with large tubular petals. Fishhook tips widely open, displaying a much deeper pink within. Short. Matures Nov. 25th.

50 cents each; \$5.00 per doz.

BLANCA (B. G. Seedling, 1943)—Very large tubular white. Very full in center. Fishhook tips. Tall. Matures Nov. 15th.

50 cents each; \$5.00 per doz.

CHEERFUL (B. G. Seedling, 1943)—Amber bronze. Slender tubular petals with fishhook tips. Very full. Good foliage. Medium height. Matures Dec. 1st. \$1.00 each; \$10.00 per doz.

CHEERIO (B. G. Seedling)—Very full cream white bloom with large tubes, hooked slightly upward at the tips. Good size. Medium height. Matures Oct. 20th. \$1.00 each; \$10.00 per doz.

FLORENCE MILLER (B. G. Seedling)—A very large delicate lavender spider. Has large tubular petals, the ends of which are ribbon-like and curly. Sturdy stem with good foliage. Medium height. Matures Oct. 15th.

75 cents each; \$7.50 per doz.

GOLDEN BEAUTY (B. G. Seedling, 1943)—Good yellow bloom. Large tubular petals terminating in fishhook tips. An outstanding number. Excellent foliage. Medium height. Matures Nov. 15th. 50 cents each; \$5.00 per doz.

GOLDEN DREAM (B. G. Seedling)—A lively yellow having large tubular petals with fishhook tips. Very full. We recommend this as one of the best of its kind. Medium height. Matures Nov. 1st. \$1.00 each; \$12.00 per doz.

HER MAJESTY (B. G. Seedling, 1943)—A mammoth delicate pink with large tubular petals terminating in well opened fishhook tips displaying within a greater depth of color. Open center when fully matured. Medium height. Matures Nov. 25th. 50 cents each; \$5.00 per doz.

IVORINE (B. G. Seedling)—Large tubed ivory white with tips that curl slightly upward. An unusually large bloom supported by a very stiff stem. Excellent foliage. Tall. Matures Nov. 15th. 75 cents each; \$7.50 per doz.

JUMBO (B. G. Seedling)—A giant size white spider. Has medium tubes slightly curled at the tips. Excellent foliage and good stem. Tall. Matures Oct. 25th. 75 cents each; \$7.50 per doz.

LAVENDER BEAUTY—Very large light lavender with medium tubes. Open fishhook tips curled slightly upward showing to advantage amaranth within. Medium height. Matures Oct. 15th. \$1.00 each; \$10.00 per doz.

MARGARET LEWIS (B. G. Seedling, 1943)—A very full and graceful bloom with cordlike tubular petals radiating from a deep lavender center and terminating in pointed tips of a paler shade. Medium height. Matures Dec. 1st.

50 cents each; \$5.00 per doz.



PALI

OJAI—Large duo toned orange bronze. Very fine tubular petals cascading downward from a full center. Unusually large and has good stem and foliage. Medium height. Matures Nov. 25th.

75 cents each; \$7.50 per doz.

ORIANA (B. G. Seedling)—An orange bronze. Has triple row of tubular petals, the hooked and open tips of which are slightly reflexed. Has open center showing a bronzy button. Tall. Matures Nov. 30th. 50 cents each; \$5.00 per doz.

PALI—A very delicate pink spider with long ribbon-like petals cascading downward from a full center of a darker shade. The open, hooked tips curl gracefully upward. Is a tall grower with stiff stem and excellent foliage. Matures Nov. 1st. See illustration above.

\$1.00 each; \$10.00 per doz.

PAUL MILLER (B. G. Seedling)—An unusually large medium tubed buff colored spider with very full red center shading to a coppery tone. The tips are of the conventional fishhook type the open ends of which are bright red in color. Has straight, stiff, clean stem. Tall. Matures Oct. 15th. See illustration page 4.

\$1.00 each; \$10.00 per doz.

PUNCH BOWL—A rich burgundy red spider with medium tubes gently falling away from a deep full center. Tips are open, hooked and tightly curled upward. The answer to a true chrysanthemum lover's dream of perfection of color and grace. Matures Nov. 1st. See illustration page 7.

\$1.00 each; \$10.00 per doz.



BUNBU (BUMBU NO KAMI)



PAUL MILLER

REVERIE (B. G. Seedling, 1943)—Large full creamy white with large tubular petals. Fishhook tips. Tall sturdy grower with excellent foliage. Matures Nov. 1st.

75 cents each; \$7.50 per doz.

SUNSPOT (B. G. Seedling)—A white spider with open center. Has yellow disc surrounded with large tubular petals slightly hooked at the tips. Good foliage and stiff stem. Medium height. Matures Nov. 1st.

35 cents each; \$3.50 per doz.

SWANSDOWN (B. G. Seedling)—Very large outstanding white with large tubes falling away from a very full center. Has slightly hooked tips. Medium height. Matures Nov. 1st.

50 cents each; \$5.00 per doz.

SYLVIA (B. G. Seedling)—A deep solid pink heightened by a delicate tracery of lavender. Large tubular petals falling away from a very full center. Tips of petals are hooked and open showing red within. One of the choicest of the 1941 Blanchard Gardens introductions. Medium height. Matures Oct. 15th.

\$1.00 each; \$10.00 per doz.

VIRGIN (B. G. Seedling, 1943)—Pure white with large tubular petals. Open fishhook tips curled slightly upward. Medium height. Matures Nov. 1st.

50 cents each; \$5.00 per doz.

VIRGINIA (B. G. Seedling)—Large white with medium tubes. Hooked tips. Tall, stiff stem and good foliage. Matures Oct. 25th.

50 cents each; \$5.00 per doz.

WAIKIKI—A very large and full bronze spidery incurve with fishhook tips of a rich golden color. An outstanding specimen of this type of chrysanthemum. Has a rigid stem and good foliage. A tall grower. Matures Nov. 1st.

\$1.00 each; \$10.00 per doz.

WHITEHALL (B. G. Seedling, 1943)—Good white medium tubular petals with fishhook tips. Tall. Matures Nov. 25th.

50 cents each; \$5.00 per doz.

WHITE LADY (B. G. Seedling, 1943)—Strikingly beautiful white with large tubular petals tumbling from an open center and terminating in fishhook tips. Very large. Medium height. Matures Nov. 25th. 75 cents each; \$7.50 per doz.

WHITE POINTS (B. G. Seedling)—Pure white spider. Very large and full. Has tubular petals with pointed tips. A tall and sturdy grower. Matures Nov. 5th. 35 cents each; \$3.50 per doz.

Standard Feather and Spider Varieties

PRICE OF ROOTED CUTTINGS (Unless Quoted Otherwise)

Each	\$.25
3 of One Name70
6 of One Name	1.30
12 of One Name	2.50

ALICE TASHIMA—Has very full petals of pure white. Fishhook tipped. Similar to Marie Tashima except that it has an open center. Tall. Matures Oct. 15th. **35 cents each; \$3.50 per doz.**

ANTOINETTE BUSH—White. Large long tubular petals with fishhook tips cascading from a



KAY TASHIMA

very full center. Tall. Matures Oct. 20c. See illustration page 8.

35 cents each; \$3.50 per doz.

ARCTIC—An early white of unusual beauty. Large tubular petals, the ends of which are very graceful. Medium height. Matures Oct. 15th.

BENTEN BRONZE—Bronze with deep red tips. Medium height. Matures Nov. 15th.

BESS WITT—A pleasing combination of apricot bronze and salmon pink. Sport from Peggy Ann Hoover. Medium height. Matures Oct. 10th.

BRONZE CHIEF—Fine tubular petals. Medium height. Matures Nov. 20th.

BUNBU (Bumbu No Kami)—Large tube lavender with hooked tip. Diameter 12 inches. Matures Nov. 1st. (See full color illustration, page 4.)

BUTTERFLY—Medium tube. Excellent yellow similar, but superior to Ohkwan, blooming ten days in advance of the latter. Medium height. Matures Oct. 25th. (See illustration right.)

CREAM WHITE—An unusually beautiful bloom of real cream white. Has medium tubular petals with well curled tips. Medium height. Matures Oct. 25th.

DAINTY WHITE—A pure white spider with slender tubular petals, the hooked tips of which curl upward. Medium height. Matures Oct. 25th. (See illustration page 8.)

GALLANT KNIGHT—Has straight tubular petals which curl slightly at tips. A very beautiful white spider with open center. Medium height. Matures Nov. 5th.

GLISTENING WHITE—Has open center with green button. Medium tubular petals which curl upward. Tall. Matures Nov. 15th.

GYOKUREN—Color is an unusually beautiful soft orchid. Has very fine tubular petals gracefully radiating from full center. Good foliage. Medium height. Matures Oct. 20th.

HONOLULU—A very full golden yellow with medium quilled petals. Graceful. Tall grower. Matures Oct. 10th.

50 cents each; \$5.00 per doz.

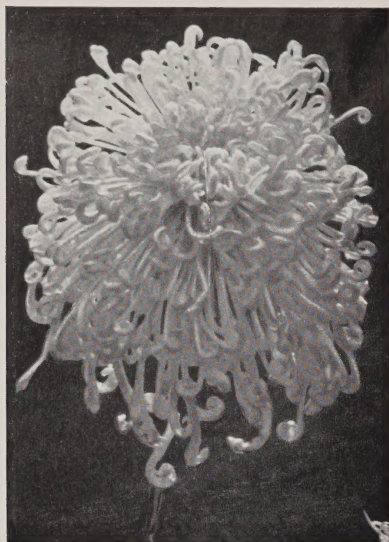
KATHERINE LOUISE—Delicate orchid. Large tubular petals terminating in open tips which hook slightly upward and show a darker shade of orchid within. An unusually beautiful bloom for late flowering. Medium height. Matures Nov. 15th on. (See illustration page 8.)

35 cents each; \$3.50 per doz.

KAY TASHIMA—White. Large tube. Fishhook tipped. Diameter 15 inches. Matures Oct. 1st. (See illustration left.)



BUTTERFLY



MARIE TASHIMA

MARIA—Very full cream colored spider with large tubular petals terminating in an upward curled tip very pale green in color. Medium height. Matures Oct. 15th.

MARIE TASHIMA—White. Large tube. Fish-hook tipped. Diameter 12 inches. Matures Oct. 5th. (See illustration above.)

MITSUKO—A striking French gray spider type bloom with lavender tips. Full center and beautifully curled petals. Medium height. Matures Nov. 10th. (See illustration page 9.)

50 cents each; \$5.00 per doz.

MRS. JERRY CRAIG—Beautiful soft golden bronze with medium tubes well curled at tips. Very full center. Medium height. Matures Oct. 15th.

50 cents each; \$5.00 per doz.

MRS. MARGARET DONOHUE—Fine tubular petals of an exquisite yellow. Diameter 12 inches. Good for pot culture. Medium height. Matures Oct. 25th. (See illustration above.)

OCTOBER MAPLE—Light bronze, medium size tubes, the ends of which are red. Medium height. Matures Oct. 25th.

OHKWAN—Fine tube petals, fully double. Yellow with good foliage and stems. Medium height. Matures Nov. 5th. (See illustration right.)

ORCHID DELIGHT—A most charming shade of delicate orchid. Very full bloom with fine tubular petals, all of which are extremely curly. A plant of real merit. Medium height. Matures Nov. 15th.

75 cents each; \$7.50 per doz.



MRS. MARGARET DONOHUE

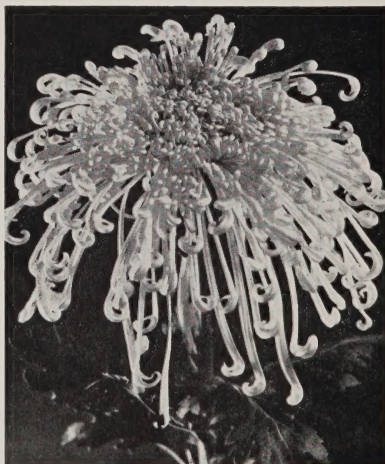
ORIENTAL—Cream. Medium tube. Plume type. Diameter 12 inches. Matures Oct. 10th.

PEGGY ANN HOOVER—Light pink with straight medium tube. Medium height. Matures Oct. 25th.

PINK VELVET—Has very fine cord-like petals of a pleasing shade of delicate pink. Medium height. Matures Nov. 1st.

35 cents each; \$3.50 per doz.

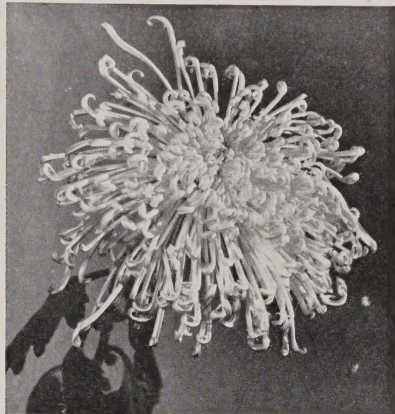
PRIDE OF SUNNYSLOPE—This beautiful delicate lavender bloom is undoubtedly one of the most outstanding of the spidery varieties. It has very fine delicate lacy petals of tubular shape and curled at the tips. Medium height. Matures Nov. 1st. 35c cents each; \$3.50 per doz.



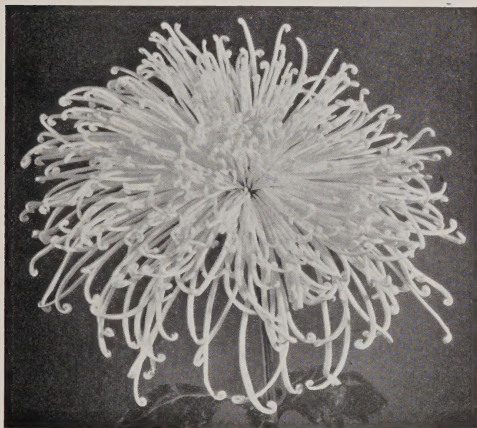
OHKWAN



PUNCH BOWL



SUE SALLY JONES



SAN MARINO



SILVER DROPS

PURPLE SPIDER—Deep purple. Large straight tubular petals. Medium height. Matures Nov. 1st.

RAYON—Pink. Very fine long petals cascading from a full compact center. Medium height. Matures Nov. 18th. **75 cents each; \$7.50 per doz.**

RED SPIDER—Wine red. Large tube. Open center. Medium height. Matures Nov. 15th.

SAN GABRIEL—Deep yellow spider with medium tubular petals, the tips of which are hooked and curled upward. Medium height. Matures Oct. 25th.

35 cents each; \$3.50 per doz.

SAN MARINO—A bright yellow with slender tubular petals. Has hooked tips that curl upward. A splendid specimen. Medium height. Matures Nov. 1st. (See illustration above.)

50 cents each; \$5.00 per doz.

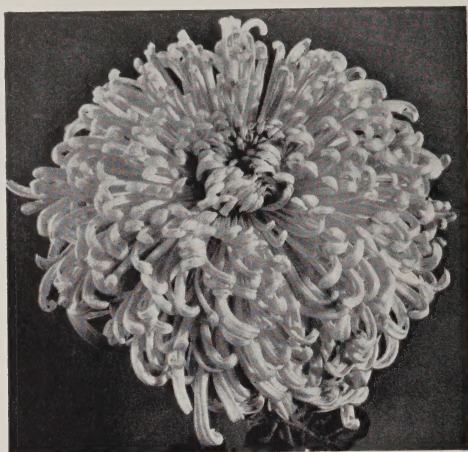
SEIJIN—Very lovely delicate pink. Large tubular petals. Good shape and has excellent foliage and stem. Medium height. Matures Oct. 15th.

SILVER DROPS—A silvery white with slender tubular petals, the tips of which are hooked and curled slightly upward. (See illustration above.)

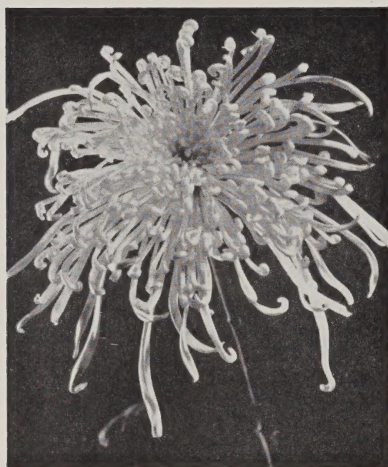
SILVER LACE—Excellent white, medium tube. Rivals Kay Tashima in size and splendor. Will produce six 12-inch blooms per plant. Medium height. Matures Oct. 15th.



DAINTY WHITE



KATHERINE LOUISE



ANTOINETTE BUSH

SONNY'S BEAUTY—Pink. Fine tube Rayonnante type. Tall. Matures Oct. 25th.

SOUVENIR—Light salmon pink. Large tube. Tall. Diameter 12 inches. Matures Oct. 25th. (See full color illustration on front cover.)

SUE SALLY JONES—Large tubular petals. A yellow spider of excellent commercial value. Good strong stem and excellent foliage. Tall. Matures Nov. 5th. (See illustration page 7.)

35 cents each; \$3.50 per doz.

TRANQUILITY—Extremely fine ivory white with medium tubular petals terminating in fishhook tips. Very full in center. Unusually strong stem with excellent foliage. Tall. Matures Nov. 15th. (See illustration page 9.)

50 cents each; \$5.00 per doz.

UNIQUE—A bloom which is aptly named. It is the most unique chrysanthemum we have ever grown. It is a rich wine red in color and the small quilled petals stand stiffly out from the center of the bloom. Very tall. Matures Nov. 1st.

WHITE FRILL—Splendid white for cut flowers. Medium tubular petals which are curly at very end of tips. Tall. Matures Oct. 25th.

WHITE RAYONNANTE—Identical with Rayonnante except in color, which is white.

WM. McCABE—Yellow. Large tubular petals. Tall. Diameter 10 inches. Matures Nov. 1st. (See full color cut bottom page 21.)

CHRYSANTHEMUMS UNDER GLASS AND OUTDOORS

By ALEX LURIE

We sell and recommend this book. Persons seeking further technical information on Chrysanthemums will find this volume interesting and helpful. Price \$1.50.



MITSUKO



TRANQUILITY

Odd Varieties and Interesting Forms

PRICE OF ROOTED CUTTINGS

(Unless Quoted Otherwise)

Each	\$.25
3 of One Name70
12 of One Name	2.50

CHAS. HOWE—A true shell pink in color. Has straight graceful petals slightly incurved. Not very full, but its color is so very unusual that it makes a most charming bloom. Matures Nov. 1st. **75 cents each; \$7.50 per doz.**

G. KONNO—A most beautiful shade of salmon rose. Has unusually wide petals radiating from a center which has an exotic swirl. Quite outstanding. Matures Oct. 15th.

J. C. TAGGARTS—A most beautiful shaped bloom of soft bronze. The quilled petals are covered with small hair which adds much to its delicate beauty. Matures Nov. 1st. (See illustration below.)

35 cents each; \$3.50 per doz.

JUI JITSU—A small feathery bloom showing a tiny yellow button center. Charmingly graceful in its formation. Short. Matures Nov. 15th.

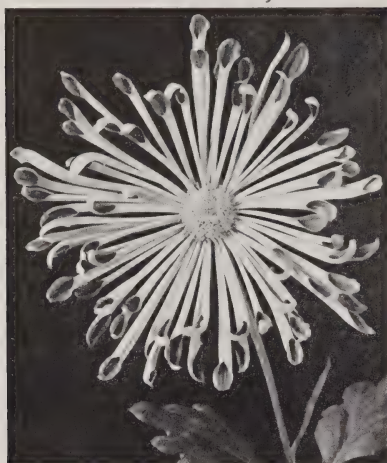
KEGON NO TAKI—Bright yellow, of unusual formation. Lower petals reflexed, balance incurved and twisted. Tall. Matures Nov. 1st. (See illustration below.)



TAGGARTS



KEGON NO TAKI



YOMEI



PINK EXQUISITE

KIMIE TASHIMA—Very bright golden single of unusual formation. Short. Matures Oct. 25th.

LAVENDER FEATHER—This is a very beautiful deep lavender feathery type. Grows tall and is very striking in appearance. Matures Oct. 25th.

MIGNONETTE—Bright yellow with fine, wavy, thread-like petals. Has much the appearance of a thistle bloom. A distinct departure from the various orthodox types of chrysanthemums. Good stem and foliage. Tall. Matures Oct. 25th.

MONTECITO—Large quilled petals with open ends. Flesh pink radiating from a darker pink center. Tall. Matures Nov. 1st.

35 cents each; \$3.50 per doz.

PAULINE—This makes a most beautiful bush of soft yellow when stopped two or more times. Has tubular petals terminating with spoon tips. Matures Nov. 1st.

PINK EXQUISITE—It is quite properly named, as it is a most exquisite shade of pink. Reflex petals which radiate from a center which has a most unique swirl. It is best to disbud this variety, having several stems to the plant. Medium height. Matures Nov. 1st. (See illustration above.)

50 cents each; \$5.00 per doz.

PURPLE FROST—Very deep purple with broad feathery petals which have just a small line of silver along each side terminating at the points. Extremely beautiful when disbudded. Medium height. Matures Nov. 5th.

ROBERT BACON—Similar in type to but very much larger than Yellow Matchsticks. Has a single row of reddish bronze quilled petals radiating from a central button of gold. Golden spoon tips. Strong stem and good foliage. Shows to best advantage when disbudded. Medium height. Matures Nov. 10th.

YELLOW MATCHSTICKS—Quilled petals with spoon-like tips. Medium sized blooms of a soft yellow. Unique and intriguing in appearance. Very prolific bloomer. Matures Nov. 10th.

YELLOW TAGGARTS—Same as J. C. Taggarts, except in color, which is yellow. (See illustration page 9.)

YOKI IMPROVED—White tubular petals terminating in spoon tips. Matures Nov. 5th.

YOMEI—Similar in formation to Robert Bacon. The color effect, however, is the reverse. The quilled petals are golden in color and terminate in red spoon tips. Good either in sprays or disbudded. Tall. Matures Nov. 10th. (See illustration above.)



BEN TASHIMA

Large Flowering Exhibition Varieties



COUNTRY MAIDEN

PRICE OF ROOTED CUTTINGS (Unless Quoted Otherwise)

Each	\$.20
3 of One Name.....	.55
12 of One Name.....	2.00

APPERT—A very large and striking golden bronze conspicuous for its light and brilliance. Tall. Matures Nov. 1st.

35 cents each; 3 for \$1.00; 12 for \$3.50.

BEN TASHIMA—An amaranth pink with silver reverse. Sturdy stem with excellent foliage. Medium height. Matures Nov. 15th. (See illustration page 10.)

25 cents each; 3 for 70 cents; \$2.50 per doz.

CLARA TRUEMAN—Semi-incurved red and gold. Medium height. Matures Nov. 10th.

25 cents each; 3 for 70 cents; \$2.50 per doz.

COUNTRY MAIDEN—A compact incurved flower of apricot bronze. Petals form a perfect ball. Medium height. Matures Oct. 25th. (See above.)

30 cents each; \$3.50 per doz.

DAIKINKA—Large incurved red with golden reverse. Good stem and foliage. Tall. Matures Oct. 15th.

35 cents each; 3 for \$1.00; 12 for \$3.50.

DR. J. M. INGLIS—Wine purple amaranth with silver reverse. Medium height. Matures Nov. 1st.

35 cents each; 3 for \$1.00; \$3.50 per doz.

E. F. HAWES—Very large red with golden reverse. Petals very wide. Reflexed. Medium height. Matures Nov. 1st.

35 cents each; 3 for \$1.00; 12 for \$3.50.

ELIZABETH ARDEN—An outstanding bloom of exquisite color. A soft coppery rose with silvery reverse. One of the most charming combinations of colors and one of the most difficult to describe. Medium height. Matures Oct. 15th.

50 cents each; 12 for \$5.00.

FALON KIRK—Very large good incurved pure white. An excellent bloom. Medium height. Matures Oct. 15th.

25 cents each; 3 for 70 cents; \$2.50 per doz.

GOLDEN HARP—Very large deep golden incurved. Bloom 8 to 10 inches in diameter. Medium height. Matures about Oct. 15th. (See illustration below.)

GOLDEN POCKETT—A rich golden sport from Louisa Pockett. A much deeper yellow than Yellow Pockett, another sport from Louisa Pockett. Petals are more delicate and of finer texture than those of either of the former. Has good stiff stem and deep, dark green foliage. Medium height. Matures Nov. 1st.

50 cents each; \$5.00 per doz.

GRACE COOLIDGE—An excellent deep pink reflex. Large blooms and well shaped. Good stiff stem with fine foliage. Medium height. Matures Nov. 15th.

50 cents each; 12 for \$5.00.

GRACE STURGIS—Wine red with pinkish-silver reverse. Reflexed. Tall. Matures Nov. 1st.

25 cents each; \$2.50 per doz.

HENRY E. TRUEMAN—Large good white incurve. Medium height. Matures Oct. 10th.

50 cents each; 12 for \$5.00.

HENRY WOOLMAN—Very large deep crimson with golden reverse. An excellent bloom with good foliage and stem. Tall. Matures Oct. 20th.

50 cents each; 12 for \$5.00.



GOLDEN HARP



MIKADO

HILO—Buff with a trace of pink which makes a most pleasing bloom. Has excellent foliage and good stem. Medium height. Matures Oct. 20th. (See illustration below.)

H. R. M. DUKE OF KENT—Very large pure white reflex bloom. Petals are unusually wide and of extremely fine texture. Good stem and excellent foliage. Tall. Matures Nov. 1st.

50 cents each; 12 for \$5.00.

JULIET—Very large deep shade of red with soft yellow reverse. A combination of color which is striking. Good foliage and stem. Medium height. Matures Nov. 1st.

50 cents each; 12 for \$5.00.

LOUISA POCKETT—Purest white. Very large incurved. Medium height. Matures Nov. 1st.

25 cents each; \$2.50 per doz.

L. W. WIGGS—Very large lemon yellow reflex. Has open center when fully developed. Strikingly beautiful. Medium height. Matures Nov. 10th.

35 cents each; 3 for \$1.00; 12 for \$3.50.

MIKADO—Large incurved. Cardinal with golden reverse. Medium height. Matures Oct. 25th. (See illustration above.)

MISS FRANCES LOWE—Color a coppery rose with a lighter reverse. The formation of the petals have a most unusual, but charming swirl and curl inward. Grows very large and has good foliage. Tall. Matures Nov. 1st.

50 cents each; 12 for \$5.00.

MISS HILDA HAYWARD—Very large delicate pink incurve. A most excellent early pink. Medium height. Matures Oct. 15th.

35 cents each; 3 for \$1.00; 12 for \$3.50.

MR. ALLEN—Salmon with golden reverse. Very large. Tall. Matures Oct. 20th.

MRS. B. D. SPILLMAN—A most pleasing color of apricot-orange, very rich in tone. Reflex petals which are large and most graceful. Medium height. Matures Nov. 1st.

50 cents each; 12 for \$5.00.

MRS. G. G. MASON—Blood red with golden reverse. Medium height. Matures Oct. 25th.

25 cents each; 3 for 70c; \$2.50 per doz.

NAGIROC—Golden bronze incurved. Center an exotic swirl of deeper tone. Striking in appearance. Medium height. Matures Oct. 20th. (See illustration page 13.)

25 cents each; 3 for 70 cents; \$2.50 per doz.

ROMULUS—Brilliant crimson red. Semi-incurved. Very tall. Matures Nov. 25th.

\$1.00 each; 6 for \$5.50; 12 for \$10.00.

THOS. W. POCKETT—Clear pink with incurved tips. Tall. Matures Nov. 1st.

THOS. W. POCKETT, IMP.—Same as Thos. W. Pockett in all respects save color, which is a much deeper pink. 50 cents each; 12 for \$5.00.

TURNER, BRONZE—Light bronze. Large incurved. Medium height. Matures Nov. 5th.

TURNER, PINK (Mrs. Leslie Davis)—Large incurved. Pleasing shade of pink. Medium height. Matures Nov. 5th.

25 cents each; 3 for 70 cents; \$2.50 per doz.

TURNER, YELLOW—Light yellow. Large incurved. Medium height. Matures Nov. 5th.

WM. TURNER—A decidedly incurved variety of purest white. Medium height. Matures Nov. 5th.



HILO



YELLOW POCKETT



NAGIRROC

WM. WARDMAN—Light yellow reflex. Very large. Excellent bloom with fine foliage. Tall. Matures Oct. 20th. 35 cents each; 3 for \$1.00; 12 for \$3.50.

YELLOW POCKETT—Light yellow. Large incurved. Medium height. Matures Nov. 1st. (See illustration above.) 25 cents each; 3 for 70 cents; 12 for \$3.50.



SUNNYSLOPE BRONZE

Large Flowering Commercial Varieties

BRONZE

PRICE OF ROOTED CUTTINGS

(Unless Quoted Otherwise)

Each	\$.15
3 of One Name.....	.40
12 of One Name.....	1.50

ALAMEDA—Reddish bronze with buff reverse. Short. Matures Oct. 25th.

35 cents each; 3 for \$1.00; 12 for \$3.50.

ANNA KASKAS—Golden bronze incurved. Tall. Matures Nov. 5th.

BRONZE FRICK—Warm shade of bronze with lighter reverse. Incurved. Medium height. Matures Nov. 20th. (See illustration page 20.)

BRONZE GEM—Medium size dark bronze incurved. Medium height. Matures Oct. 25th.

BRONZE LODE—Bronze incurved. Medium height. Matures Oct. 1st.

GLENVIEW—Bronze incurved. Short. Matures Nov. 24th.

GLITTERS—Bright bronze. Medium height. Matures Oct. 20th. (See full color page 16.)

20 cents each; 3 for 55 cents; 12 for \$2.00.

HILDA BERGEN—Good incurved. Short. Matures Oct. 25th.

INDIAN CHIEF—Deep reddish bronze, golden buff reverse. Medium height. Matures Nov. 1st.

INDIANOLA—Light bronze incurved. Medium height. Matures Oct. 10th.

ADONIA—A deep shell-pink reflexed. Medium height. Matures Oct. 25th.

20 cents each; 3 for 55 cents; 12 for \$2.00.

AIKO—Very large incurved deep lavender, petals of which shade off to a cream at the tips. Tall. Matures Oct. 10th.

50 cents each; 12 for \$5.00.

APRICOT MAY WALLACE—Incurved. Distinctive shape. Pastel shade of apricot. Tall. Matures Nov. 15th.

BEN FRANKLIN—An extremely delicate shade of orchid. Incurved. Medium height. Matures Nov. 5th.

50 cents each; 12 for \$5.00.

BUTO—A very light pink incurved of large size. Good keeper and a strong grower. Medium height. Matures Oct. 5th.

DR. ENGUEHARD—Bright rosy pink incurved. Medium height. Matures Nov. 15th.

EDWIN SEIDEWITZ, IMPROVED—Bright pink incurved. Fuller and darker than Edwin Seidewitz. Tall. Matures Nov. 15th.



SNOW WHITE

OAK LEAF—Dark bronze bloom eight inches. Medium height. Matures Nov. 20th.

20 cents each; 3 for 55 cents; 12 for \$2.00.

SUNNYSLOPE BRONZE—An excellent large compact golden bronze. It is a perfect incurved bloom and is an excellent keeper. Medium height. Matures Nov. 1st. (See illustration page 13.)

50 cents each; 12 for \$5.00.

PINK

GWEN PATTON—Good pink incurve. Large bloom and a good keeper. Medium height. Matures Oct. 30th. (See illustration page 20.)

35 cents each; 3 for \$1.00; 12 for \$3.50.

INDIANAPOLIS PINK—Excellent light lavender pink with darker reverse. Fully incurved. Has very stiff stem and good foliage. Medium height. Matures Nov. 1st.

20 cents each; 3 for 55 cents; 12 for \$2.00.

JUSTRITE—Incurved, solid bloom. Lavender pink. Medium height. Matures Oct. 15th.

LUSTRE—Large incurved. Fetching shade of lavender pink. Short. Matures Oct. 10th.

MAY WALLACE—A nicely incurved shell-pink. Tall. Matures Nov. 15th.

MIMA GARSON—Pink reflex. Good foliage. Medium height. Matures Nov. 1st.

20 cents each; 3 for 55 cents; 12 for \$2.00.

MISS HELEN FRICK—Large incurved orchid pink. Medium height. Matures Nov. 20th. (See full color illustration page 20.)

MITY NICE—Lavender pink incurved. Excellent color. Medium height. Matures Oct. 15th.

ORCHID QUEEN—A large orchid-pink incurved bloom. Has a very stiff stem and unusually attractive foliage. Tall. Matures Nov. 1st.

PASADENA POST—Very pale pink reflex. Short. Matures Nov. 15th.

50 cents each; 12 for \$5.00.

PETER JOHN—Has all characteristics of Thanksgiving Pink except color, which is much lighter in shade. Medium height. Matures Nov. 25th.

20 cents each; 3 for 55 cents; 12 for \$2.00.

PHILIP KAY—A magnificent tight incurved globular flower of solid substance. Color is very pleasing shade of light lavender pink. It has very thick strong stem with broad dark green leaves right up to the very neck of the flower, which give an appearance of an immense artificial corsage in itself. The petals will not shatter. We believe this is the largest tight incurved flower we know. Will grow to about 4½ feet tall from June planting. Blossoms Nov. 5th on. (See illustration back cover page.)

\$1.00 each; \$10.00 per doz.

PINK CHIEF—A lively rose pink, truly commercial in character. A tall straight grower. Matures Oct. 15th.

PINK DELIGHT—Rose pink blooms of good size. Reflexed. Good stem and foliage. Medium height. Matures Oct. 20th.

PINK MISTLETOE—Large incurved. Medium height. Matures late November to Christmas.

QUAKER LADY—Large incurved light orchid pink. Medium height. Matures Nov. 1st.

ROSE COCHARD—A large incurved pink of a pleasing shade. Stiff stem and excellent foliage. Medium height. Matures Oct. 15th.

ROSEUM—Large deep pink incurved of special merit. Good stem and clean foliage. An excellent keeper. Tall. Matures Oct. 15th.

25 cents each; \$2.50 per doz.

THANKSGIVING PINK—Dark pink reflexed. Medium height. Matures Nov. 20th.

THE PILOT—Rose pink incurved. Medium height. Matures Oct. 15th.

25 cents each; 3 for 70 cents; 12 for \$2.00.

RED

ARMISTICE DAY—Medium incurved. Red with gold reverse. Medium height. Matures Nov. 5th. 20 cents each; 3 for 55 cents; 12 for \$2.00.

BLACK HAWK—Reflexed. Similar to Harvard, except deeper in color and lack of serration of semi-quilled petals. Medium height. Matures Nov. 30th.

BONNAFON RED—Deep wine red incurved. Excellent stem and foliage. Tall. Matures Nov. 5th. 20 cents each; 3 for 55 cents; 12 for \$2.00.

FERDINAND—Red incurved, very pleasing color and shape. Tall. Matures Nov. 10th.

\$1.00 each; 3 for \$2.75; 12 for \$10.00.

GARNET KING—True reflexed. Garnet red. Petals about center tipped with bronze. Medium height. Matures Nov. 25th.

GOV. GREEN—Semi incurved red with golden reverse. Medium height. Matures Nov. 15th.

HARVARD—Reflexed. Brilliant dark, satiny red. Medium height. Matures Nov. 20th. (See full color illustration page 21.)

INTENSITY—Deep red reflex of outstanding beauty. Medium height. Matures Dec. 5th.

JESSIE POWELL—Good red reflex. Medium height. Matures Nov. 1st.

35 cents each; 3 for \$1.00; 12 for \$3.50.

MOHAWK CHIEF—Red with golden reverse. Medium height. Matures Nov. 15th.

MURILLO—Dark red. Good China mum. Medium height. Matures Dec. 20th.



SUNNYSLOPE WHITE



AMBASSADOR



GLITTERS

WHITE

ALBATROSS—Large, full, glistening white. Tall. Matures Oct. 25th.

AMBASSADOR—Extra large full incurved. Medium height. Matures Oct. 20. (See illustration above.)
20 cents each; 3 for 55 cents; 12 for \$2.00.

ARIEL—Snowy white tight compact incurve. Excellent foliage and stiff stem. Medium height. Matures Nov. 1st.

50 cents each; 12 for \$5.00.

BOAKE CARTER—Ivory white semi-incurved. Very large. Short. Matures Oct. 10th.

25 cents each; 3 for 70 cents; 12 for \$2.50.

CAMILLA—Well rounded, satiny white incurved. Tall. Matures Oct. 10th.

CHAS. RAGER—Good white. Medium sized incurved. Medium height. Matures Nov. 10th.

CHATTANOOGA—Large pure white incurved. Medium height. Matures Dec. 1st.

DR. KIRTHER—Pure white incurved. Spherical in shape, with good foliage and stem. Medium height. Matures Oct. 15th.

35 cents each; 3 for \$1.00; 12 for \$3.50.

ILLO—Good white incurve. Medium height. Matures Nov. 25th.

20 cents each; 3 for 55 cents; 12 for \$2.00.

LADY WHITE—A good sized pure white incurved. Strong, upright habit of growth. Good foliage. Medium height. Matures Nov. 10th.

MARGARET GRAHAM—Large pure white round bloom. Has stiff stem and fine foliage. Medium height. Matures Nov. 15th.

MARKETEER—Perfectly formed incurved. White. Matures Nov. 15th.

MISS FLORA BOWERS—Large white incurved; interlacing petals; 7½ inches in diameter. Height 4 feet. Matures Nov. 25th.



WHITE HELEN FRICK

MONUMENT — White incurved. Strong stem. Medium height. Matures Nov. 10th.

SNOW WHITE—Incurved with satiny white sheen. Medium height. Matures Nov. 1st. (See illustration page 14.)

STATELY WHITE — Round pure white bloom. Medium height. Matures Nov. 1st.

STROMNESS—A snow white sport of Greer Garson. Reflexed and having a most intriguing central swirl. Good keeper. Best raised as a China mum. Good strong stem and excellent foliage. Matures normally around Oct. 25th. Medium height. (See illustration right.)

50 cents each; \$2.50 per doz.

SUNNYSLOPE WHITE — A perfect incurved type of good solid substance. Has a good strong stem and fine foliage. Good keeping qualities. Medium height. Matures Nov. 20th. (See illustration page 15.)

25 cents each; 3 for 70 cents;
12 for \$2.50.

VENUS — Large incurved. Medium height. Matures Oct. 1st.

WHITE HELEN FRICK — Satiny white incurved. Short. Matures Nov. 1st. (See illustration page 16.)



STROMNESS

YELLOW

APRICOT QUEEN—Brilliant orange. Medium height. Very large and striking bloom. Is classified by many growers as an exhibition. Matures Oct. 25th.

BLAZING GOLD—An intense golden yellow of good size. Fully incurved. Has stiff stem and perfect foliage. Medium height. Matures Oct. 15th. 20 cents each; 3 for 55 cents; 12 for \$2.00.

BONNAFFON DeLUXE—Rich golden yellow. Short. Matures Nov. 1st.

BONNAFFON (Major)—Medium sized incurved. Medium height. Matures Nov. 10th.

BONNAFFON (Shibuya)—Medium sized incurved. Good yellow. Medium height. Matures Nov. 20th.

CARDONIA—Large deep rich yellow incurved. Medium height. Matures Nov. 1st.

CELESTRA—Large ball type lemon yellow. Tall. Matures Oct. 10th.

CHATTANOOGA GOLDEN—Very large rich golden incurved. Same as yellow Chattanooga save color. Medium height. Matures Dec. 1st.
20 cents each; 3 for 55 cents; 12 for \$2.00.

CHATTANOOGA YELLOW—Very large light yellow incurved. Medium height. Matures Dec. 1st.

CHRYSALORA — Sulphur yellow incurved. Medium height. Matures Oct. 15th.

COMET—Deep golden yellow incurved, perfect in form. Fine stem and foliage. Medium height. Matures Oct. 15th.

CORONA—Bright yellow incurved bloom. Good stem and excellent foliage. Tall. Matures Oct. 25th.

DECEMBER QUEEN—Reflex. Tall. Matures Nov. 25th. (See full color illustration page 20.)

FRIENDLY RIVAL—One of the best brilliant yellow incurved. Medium height. Matures Nov. 15th.

GOLDEN ARBINI—Deep yellow, fully double and gracefully reflexed in form. Medium height. Matures Nov. 20th. (See illustration page 18.)

GOLDEN GLORY — Bright yellow incurved. Very good. Medium height. Matures Oct. 10th.

GOLDEN MEASURE — Golden yellow. Tall. Matures Oct. 25th.

GOLDEN MISTLETOE—Large incurved. Medium height. Matures late Nov. to Christmas.

GOLDEN WEDDING—Good yellow reflex. Excellent foliage and good stem. Tall. Matures Nov. 1st.



OHGON NO SATO

GOLD LODGE—An early yellow. Medium height. Matures Oct. 5th.

LILLIAN FOLTZ—Yellow incurve of good shape and texture. Medium height. Matures Oct. 25th.

35 cents each; 3 for \$1.00; 12 for \$3.50.

MONROVIA—Good yellow. Incurved. Also excellent for sprays. Medium height. Matures Oct. 1st.

MRS. WM. THAW, JR.—Incurved, clear golden yellow. Matures Nov. 10th.

OHGON NO SATO—Rich golden yellow of an unusually striking configuration. Medium height. Matures Oct. 25th. (See illustration above.)



GOLDEN ARBINI

SECRETARY NEHRLING—Perfect form. Bright yellow semi-incurved. Good stem and foliage. Tall. Matures Nov. 15th.

SUNGLOW—Bright yellow incurved. Satiny sheen. Medium height. Matures Oct. 25th.

SUN GOLD—Large yellow incurved. Tall grower. Matures Nov. 25th.

SUNNYSLOPE GOLD—Large full yellow bloom of good substance. Excellent stem and foliage. Medium height. Matures Oct. 20th.

20 cents each; 3 for 55 cents; 12 for \$2.00.

YELLOW GOWN—Medium sized incurved. Medium height. Matures Sept. 10th.

YELLOW MONUMENT—Sport of Monument. Light yellow incurved. Medium height. Matures Nov. 5th.

Pompon Section

Button Type

PRICE OF ROOTED CUTTINGS

(Unless Quoted Otherwise)

Each	\$.15
3 of One Name40
6 of One Name75
12 of One Name	1.30

ADORABLE—Good yellow. Medium height. Matures Dec. 15th.

AGATE—Yellow with red eye. Short. Matures Oct. 30th.

BABY—Tiny bright yellow baby button. Medium height. Matures Nov. 25th.

BETTY PRICE—Brilliant orange, suffused with light bronze. Medium height. Matures Nov. 25th.

BOBETTE—Lavender with darker center. Good bloomer. Medium height. Matures Dec. 5th.

BRIGHT SPOT—Good white. Small. Medium height. Matures Nov. 10th.

BRONZE PERFECTION—Well named. Tall. Matures Nov. 15th.

BROWN BUTON—Bronze. Very prolific, upright growth. Matures Nov. 10th.

CLARE—White. Compact baby button. Very prolific. Matures Dec. 1st.



BUTTONS

CRYSTAL JEWEL—White. Tall. Matures Nov. 20th.

DAINTY MAID—White baby button tinged with pink. Medium height. Matures Nov. 10th.

DOROTHY NEHRLING—Deep rose pink. Medium height. Matures Nov. 15th.

ETHEL—Reddish-bronze. Medium height. Matures Oct. 25th.

IRENE—White. Short. Matures Oct. 15th.

JEWELL—A large button, bright pink in color. Very free flowering. Short. Matures Oct. 1st.

LOIS—A dark golden button shading to orange. It is very similar to Nuggets in formation and growing habits. It meets with our hearty recommendation. Medium height. Matures Nov. 5th.

NEW YORK—Good solid bronze. Same as yellow New York in all respects save color. Tall. Matures Oct. 15th.

NORINE—Very fine orange bronze. Tall. Matures Nov. 15th.

NUGGETS—One of the best early yellows, rich golden in color. Has excellent foliage and stiff stem. Will not droop when laden with moisture. Medium height. Matures Oct. 25th.

OCTOBER SNOW—Solid close compact white bloom. Medium height. Matures Oct. 15th.

OTTAWA—Orange bronze. Medium height. Matures Nov. 25th.

PERSIAN ROSE—Brilliant rose pink. Large button. Short growth. Matures Oct. 20th.

ROBERT HENDERSON—Dark rose. Medium sized button. Medium height. Matures Dec. 15th.

VIVIAN—Orange bronze. Medium height. Large. Matures Nov. 15th.

YELLOW NEW YORK—Yellow. Medium height. Matures Oct. 15th.

Intermediate Type

PRICE OF ROOTED CUTTINGS

(Unless Quoted Otherwise)

Each	\$.15
3 of One Name40
6 of One Name75
12 of One Name	1.30

ADELAIDE—A deep rich mahogany bronze. A clean, healthy grower of medium height. Matures Oct. 10th.

AMARANTHEA—Purple crimson. Medium height. Matures Dec. 20th.

APRICON—Deep apricot yellow. Exceptionally good. Tall. Matures Dec. 1st.

25c each; 3 for 70c; 6 for \$1.25; 12 for \$2.25.

BEUNETA—Bronze, tipped with gold. Medium height. Matures Nov. 25th.

BONNIBEL—A small pompon orange buff in color. Short. Matures Oct. 15th.

BONNIE MAID—Good pink. Medium height. Matures Nov. 5th.

CALIFORNIA BEAUTY—Purple. Good stem and foliage. Medium height. Matures Nov. 10th.

25c each; 3 for 70c; 6 for \$1.25; 12 for \$2.25.

CALIFORNIA FIREBIRD—Bronze with glints of gold. Exotic in formation and very graceful. Tall. Matures Dec. 1st.

CANARY—Brilliant yellow of striking beauty. Medium height. Matures Dec. 10th.

CAPT. COOK—A rose pink intermediate pompon. Tall, strong grower. Good foliage. Matures Oct. 20th.

CAVALCADE—Bright mandarin red with each cupped petal showing a golden bronze reverse—the whole making a pleasing combination. Matures Dec. 10th.

CHRISTMAS CHEER—Orange. A very good late variety. Medium height. Matures Dec. 10th.

CHRISTMAS RED—Deep red decorative. Medium height. Matures Dec. 10th.

CLAREMONT—Good yellow decorative. Medium height. Matures Dec. 15th.

DERIGOLD—Fine sprays of an outstanding brilliant yellow. Heavy bloomer. Medium height. Matures Nov. 10th.

EARLI-WHITE—Good clear white. Medium height. Matures Oct. 1st.

(Continued Page 22)



GWEN PATTON

The best pink in the large incurve we know of. Keeps well, making it excellent for home decoration. Height 4 feet tall. Matures late October. See description page 14.



Upper left:
MISS HELEN FRICK
See page 14 for
description.

Upper right:
BRONZE FRICK
See page 14 for
description.

Lower center:
DECEMBER QUEEN
See page 17 for
description.

Pleasing Table Arrangements



Above—Blooms at center and left are "William McCabe," a spidery type. (See page 8.)



"Harvard," above, is a large flowering commercial variety, reflexed. Brilliant dark, satiny red. (See page 15.)



"Coral Blaze," above, is a large flowering anemone type chrysanthemum, orange bronze in color with an orange bronze cushion. (See p. 25.)

GLOW—Orange. Reddish-orange at center. An exotic. Medium height. Matures Nov. 20th.

GOLDEN CHARM—Good small decorative yellow. Medium height. Matures Oct. 10th.

GOLDEN SPRAY—Excellent intermediate for cut flowers. Good yellow. Medium height. Matures Oct. 10th.

HELEN HUBBARD—Beautiful red decorative. Medium height. Matures Dec. 10th.

HELEN NEWBERRY—An excellent white decorative. Tall. Matures Dec. 15th.

HERITAGE—Reddish-bronze. Good intermediate. Tall. Matures Nov. 15th.

25c each; 3 for 70c; 6 for \$1.25; 12 for \$2.25.

IROQUOIS—Close compact bronze. Crisp flowers 2½ inches in diameter. Matures Dec. 5th.

JEMIMA—Excellent bronze. Medium height. Large. Matures Oct. 28th.

JESSIE (Madeline)—Deep rose pink. Excellent early bloomer. Medium height. Matures Oct. 25th.

JOAN WELLS—Good bronze. The center is a much darker shade, which adds greatly to the attractiveness of the bloom. Tall. Matures Oct. 15th.

KAINO BRONZE—A lovely warm bronze. Intermediate decorative. Medium height. Matures Dec. 20th.

KAINO RED—Same as Kaino Bronze in all respects save color, which is a deep red. Medium height. Matures Dec. 20th.

LETITIA—Light pink with dark pink eye. Similar to Pink Dot, only larger. Medium height. Matures Nov. 5th.

LOS ANGELES—Clear scarlet. Decorative. Medium height. Matures Nov. 15th.

MEMORIES—An exceptionally good late white. Tall. Matures Dec. 20th.

MILLO ASEL—An early bronze decorative. Good foliage. Medium height. Matures Oct. 15th.

MOTHER OF PEARL—Good pink. Makes an excellent cut flower. Medium height. Matures Dec. 15th.

MRS. NELLIE KLARIS—Good early pink. Medium height. Matures Oct. 15th.

NATOMA—Flame scarlet decorative pompon. Short, bushy grower. Matures Oct. 25th.

NIZA—Light pink. Excellent early pompon. Medium height. Matures Oct. 5th.

NOVEMBER GLOW—Fine brilliant yellow. Tall. Matures Nov. 25th.

OURAY—Dark mahogany brown. Wiry stems. Medium height. Matures Oct. 20th.

PASADENA—Vivid orange bronze. Medium height. Matures Nov. 1st.

PINK DOT—Light pink with dark pink eye. Matures Oct. 20th.

ROBIN HOOD—An outstanding large red button. Medium height. Matures Nov. 10th.

RODELL IMPROVED—A bright yellow decorative pompon producing excellent sprays. Good foliage. Short. Matures Oct. 20th.

ROMAN BRONZE—Bronze sport from Capt. Cook. Tall. Matures Oct. 20th.

SNOW—Very good late pure white. Medium height. Matures Dec. 20th.

SUNSET—Good late yellow semi-double pompon. Very tall grower. Matures Nov. 20th and later.

TONQUIN—Rose pink. Very productive. Strong stem. Medium height. Matures Dec. 10th.

TREASURE GOLD—Excellent yellow. Medium height. Matures Nov. 20th.

VIBRANT—One of the very best late yellow decorative pompons. Medium height. Matures Dec. 20th.

WHITE PEARL—Good early white pompon. Medium height. Matures Oct. 15th.

WHITE TONQUIN—A good late white identical with Tonquin in all characteristics except color. Matures Dec. 10th.

WINTERSET—The latest yellow intermediate pompon. Good brilliant yellow. Short. Matures Dec. 20th.

25c each; 3 for 70c; 6 for \$1.25; 12 for \$2.25.

YELLOW DOT—An unusually good yellow with dark center. Is a good bloomer and makes a good cut flower. Medium height. Matures Oct. 20th.

Large Type Suitable for Disbudding

BRONZE

PRICE OF ROOTED CUTTINGS

(Unless Quoted Otherwise)

Each	\$.15
3 of One Name.....	.40
6 of One Name.....	.75
12 of One Name.....	1.30

ALECIA—Golden bronze. Medium height. Matures Oct. 25th.

AVALON—Orange' bronze. Medium height. Matures Nov. 25th.

BRONZE DOTY—Light bronze. Good sprays; strong stems. Medium height. Matures Nov. 5th.

BRONZE MASTERPIECE—Sport from Masterpiece. Same in all respects except color. Tall. Matures Nov. 15th.

25c each; 3 for 70c; 6 for \$1.25; 12 for \$2.25.

CATHERINE—Bronze. Similar to Legal Tender. Medium height. Matures Nov. 20th.

DOROTHY TURNER—In color a combination of bronze and old gold with deep crimson center. Medium height. Matures Nov. 25th.

FIRE BIRD—Reddish bronze. Medium height. Matures Oct. 25th.

NOVEMBER BRONZE—Orange-bronze. Medium height. Matures Nov. 15th.

PAWNEE CHIEF—Bright reddish-bronze. Medium height. Matures Nov. 1st.

WILDFIRE—Brilliant orange rust. Reflexed blooms on well formed sprays. Medium height. Matures Nov. 25th.

PINK

ANGELO—Soft shade of pink. Tall. Matures Oct. 5th.

AZORA—Light pink, spherical in shape when disbudded; strong growth; blooms 4½ inches. Medium height. Matures Oct. 10th.

CALIFORNAL PRIDE—Deep pink. Lasting in both color and substance. Stiff stem and excellent foliage. One of the best. Tall. Matures Nov. 5th.

DR. W. R. PETTIT—Excellent pink. Large compact bloom. Good stiff stem and perfect foliage. Tall. Matures Oct. 15th.

ILLONA—Lavender pink. Straight, stiff-stemmed. Tall. Matures Nov. 10th.

IZALCO—Purple. Well rounded full bloom when disbudded. Tall. Matures Oct. 15th.

25c each; 3 for 70c; 6 for \$1.25; 12 for \$2.25.

KAINO PINK—Fully double. Valencia pink. Large flowering pompon. Four inches in diameter when disbudded. Good producer with excellent blooms on spray. Medium height. Matures Nov. 20th.

MASTERPIECE—Tourmaline pink. Very prolific. Sturdy stem. Tall. Matures Nov. 15th.

20c each; 3 for 55c; 6 for \$1.00; 12 for \$1.75.

OLIVIA—Dark pink; soft in appearance. Tall. Matures Nov. 25th.

PROSPERITY-POM—Good pink large pompon. Medium height. Matures Dec. 20th.

ROMOLA—A perfectly formed, large pompon. Soft light pink of excellent substance. Strong stem. Tall. An outstanding variety both as to color and shape. Matures Oct. 20th.

ROSE CHARM—Rose-pink; spherical in shape; 3½ inches in diameter. Tall. Matures Nov. 1st.

SAN ANTONIO—Large pink pompon. Medium height. Matures Dec. 20th.



AN ASSORTMENT OF DISBUDED POMPONS

RED

CAMPFIRE—Orange-red, red gold reverse. Close compact blooms. Tall. Matures Nov. 20th.

CAPT. BLOOD—Red with gold tips. Medium height. Matures Nov. 25th.

MRS. MARY HOOKER—Tall. Matures Nov. 15th.

RED DOTY—Very large red similar to White Doty except in color. Medium height. Matures Oct. 25th.

ROYAL CRIMSON—Deep, rich crimson. Decorative pompon. Medium height. Matures Nov. 20th.

WHITE

ARCADIA—Pure white, well rounded blooms. Extremely productive. Matures Oct. 25th.

CHICAGO PEARL—Very large full white. Spherical in shape when disbudded. Medium height. Matures Nov. 1st.

CORDOVA—Large, free flowering white. Up-right growth. Medium height. Matures Nov. 25th.

CRYSTAL WHITE—Very large. Spherical in shape when disbudded. An excellent cut flower when left to grow in sprays. Medium height. Matures Nov. 10th.

25c each; 3 for 70c; 6 for \$1.25; 12 for \$2.25.

DIANA—A snowy white of exquisite lacy daintiness. Sturdy growth. Medium height. Matures Nov. 5th.

GRETA—Extremely prolific early white. Medium height. Matures Oct. 1st.

MARIANA—A good pure white pompon of exquisite beauty. One of the best early whites. Medium height. Matures Oct. 15th.

ROYAL QUEEN—Excellent late white. Medium height. Matures Dec. 1st.

SILVER BALL—Pure white. Flowers 4 inches in diameter. Height 4 feet. Matures Sept. 25th.

TOUCHDOWN—A very lovely creamy white round pompon. Tall. Matures Oct. 10th.

WHITE DOTY—Very large, creamy white. Tall. Matures Oct. 25th.

WHITE TREASURE ISLAND—One of the very best late white pompons. Grows very large. Tall. Matures Dec. 10th.

YELLOW

BALL OF GOLD—Well rounded, full blooms when disbudded. Prolific bloomer. Medium height. Matures Nov. 10th.

BRISTOLITE—Deep orange on very strong stiff stems. One of the largest disbudded pompons extant. Medium height. Matures Nov. 10th.

GOLDEN CORDOVA—Same as Cordova in all respects save color, which is deep yellow. Medium height. Matures Nov. 25th.

GOLDEN FAIRY—An excellent yellow, equally good when disbudded or grown in sprays. Medium height. Matures Oct. 23rd.

HASEGAWA YELLOW—Golden yellow. Sturdy, erect growth. Medium height. Matures Nov. 20th.

MARY LENNON HALL—Bright yellow. Tall. Erect growth. Matures Oct. 20th.

MASAKA—Bright yellow. Flowers 3 inches in diameter. Tall. Matures Oct. 10th.

NOVEMBER YELLOW—Soft, downy yellow of good size. Tall, erect growth. Matures Nov. 15th.

UNALGA—Good yellow. Medium height. Matures Nov. 25th.

YELLOW ARCADIA—Same as Arcadia in all respects save color, which is a golden yellow. Medium height. Matures Oct. 25th.

YELLOW ASTER—Orange. Large sprays. Flowers of high rounded center. Very prolific. Strong, sturdy growth. Medium height. Matures Nov. 15th.

YELLOW DOTY IMP.—This is a far superior bloom to the old yellow Doty. Has good foliage and a stiff stem. Medium height. Matures Nov. 15th.

25c each; 3 for 70c; 6 for \$1.25; 12 for \$2.25.

YELLOW FELLOW—Well rounded yellow. Stiff stem. Medium height. Matures Nov. 10th.



Anemone Section

BRONZE



ESTRELITA

BRONZE CHARM—Chestnut bronze with high, bronze cushion. Medium height. Matures Oct. 20th.

BRONZE NORMA—Bronze with bronze cushion. Medium height. Matures Oct. 20th.

BRONZE SUPREME—Light bronze with light bronze cushion. Medium height. Matures Oct. 20th.

BRONZE TUXEDO—An apricot bronze sport from Tuxedo. Has the same excellent qualities of the former, differing in color only. Tall. Matures Nov. 1st.

25 cents each; 3 for 70 cents; \$2.50 per doz.

CORAL BLAZE—Deep orange bronze ray petals radiating from a well delineated disc of quilled florets, a trifle shallower in tone. A coordination of mensuration and gentle blend of hue that will appeal to the most fastidious connoisseur of the anemone type of chrysanthemum. A stocky plant that will hold its head up when laden with moisture. Height 3 feet. Matures Nov. 25th. (See full color illustration page 21.)

25 cents each; 3 for 70 cents; \$2.50 per doz.

NEW GOLD

The Anemone flowered chrysanthemum consists of one or more rows of flat or tubular ray florets with shorter quilled or tubular disc florets sometimes of the same color, sometimes otherwise. The large flowering Anemone types, all of those catalogued herein being included, are usually pinched when small, permitting four to six growths to continue until buds are formed. Disbudding is a matter of individual taste. If allowed to flower without restriction each stem will produce a large spray or cluster of blooms. This type of mum is of marvelous beauty and should be given full consideration by those who are looking for something artistic and unusual.

PRICE OF ROOTED CUTTINGS

(Unless Quoted Otherwise)

Each	\$.15
3 of One Name.....	.60
12 of One Name.....	1.50

BIZARRE — Pinkish bronze with large, well rounded bronze cushion, tipped with gold. Medium height. Matures Oct. 25th. 20 cents each;

3 for 55 cents; \$2.00 per doz.



ESTRELITA—A buff bronze throughout, conspicuous for the great size of its regular flat disc of quilled florets as opposed to its shorter serrations of ray petals. A sturdy grower of medium height. Matures Nov. 15th. (See illustration page 25.)

20 cents each; 3 for 55 cents; \$2.00 per doz.

RUSTIC—Small decorative of good soft bronze. Short. Matures Dec. 1st.

25 cents each; 3 for 70 cents; \$2.50 per doz.

YOLANDA—Soft beautiful bronze throughout. An exceptionally good bloom. Tall. Matures Dec. 15th.

P I N K

ADMIRATION—Lavender pink with yellow cushion. Tulip shaped. Matures Oct. 15th.

20 cents each; 3 for 55 cents; \$2.00 per doz.

ANTIGO—A deep rose of unusual beauty. Cushion and ray petals of same color. Large. Medium height. Matures Nov. 1st.

20 cents each; 3 for 55 cents; \$2.00 per doz.

BEAUTIFUL LADY—Bright shade of pink with creamy white cushion. Large blooms. Semidwarf in growth. Plant early. Matures Nov. 20th.

20 cents each; 3 for 55 cents; \$2.00 per doz.

BIRDINE—Pink with large white cushion. Medium height. Matures Oct. 20th.

20 cents each; 3 for 55 cents; \$2.00 per doz.

DORIS LOUISE—A deep rose sport of Frieda. Medium height. Matures Oct. 15th.



SINCERITY



THE TITAN

ELISA PIEL—Large light lavender with high yellow cushion. Tall. Matures Nov. 1st.

ELIZABETH—Soft light pink. Large with good foliage. Medium height. Matures Nov. 30th.

FRIEDA—Ranging from a deep shell-pink to a deep orchid pink in accordance with a corresponding moderation of high temperatures. Has small yellow cushion. Produces wide spread sprays on stiff sturdy stems. Blooms six inches in diameter when disbudded. Tall. Matures Oct. 15th.

H. J. BALLOUGH—Orchid pink with yellow cushion. Short. Matures Nov. 10th.

LINDA LOU—Deep lavender with yellow cushion. Intermediate. Medium height. Matures Nov. 5th.

LULABEL—Suffused pink with well rounded yellow cushion. Medium height. Matures Dec. 1st. 25 cents each; 3 for 70 cents; \$2.50 per doz.

MRS. J. S. ROBERTS—A combination of crimson mauve and violet. One of the largest anemones grown. Short. Matures Nov. 10th.

25 cents each; 3 for 70 cents; \$2.50 per doz.

NORMA—Creamy white with yellow cushion from early buds. Petals tinted with pink and cushion rosy bronze when late bud is taken. Has a full cushion and several rows of petals. Tall. Matures Nov. 1st.

20 cents each; 3 for 55 cents; \$2.00 per doz.

ORCHID BEAUTY—Orchid pink with yellow cushion. Short. Matures Nov. 15th.

PINK SUPREME—Large delicate pink. Tall. Matures Dec. 15th.

25 cents each; 3 for 70 cents; \$2.50 per doz

ROSE MADDER—A deep rose-pink throughout. Has a prominent disc of quilled petals surrounded by a double row of short, pointed ray petals closely spaced. While we catalogue this flower for ordinary garden use, we can recommend it highly for use as a Cascade. Medium height. Matures Nov. 15th.

CAPTIVATION—Mahogany red; cushion reddish-bronze; exceptionally large. Medium height. Matures Nov. 10th.

CRIMSON GLOW—Crimson maroon with large crimson cushion. An unusual combination of colors. Short. Matures Nov. 20th.

BLANCHE—White with high well rounded cushion. Intermediate. Medium height. Matures Nov. 1st.

20 cents each; 3 for 55 cents; \$2.00 per doz.

BOB WHITE—White with cream cushion. Very large with good foliage. Medium height. Matures Nov. 5th.

20 cents each; 3 for 55 cents; \$2.00 per doz.

C. D. WOLFE—White petals with white cushion. Intermediate. Medium height. Matures Oct. 20th.

FAITH—Cream white ray petals with yellow cushion. Large. Medium height. Matures Nov. 1st.

GARZA SUPREME—White. Medium height. Matures Dec. 1st.

GRAF VON AVON—White with yellow cushion. Medium height. Matures Oct. 20th.

20 cents each; 3 for 55 cents; \$2.00 per doz.

LITTLE AMERICA—Petals and cushion, both good white. Intermediate. Medium height. Matures Nov. 1st.

ALOYSIA—Large yellow with yellow cushion. Medium height. Matures Oct. 1st.

20 cents each; 3 for 55 cents; \$2.00 per doz.

CITRUS QUEEN—Lemon yellow with high rounded orange cushion. Tall. Stiff stem. Matures Dec. 1st.

20 cents each; 3 for 55 cents; \$2.00 per doz.

FAITH ENGEL—Bright yellow petals with same shade cushion. Intermediate. Short. Matures Nov. 15th.

20 cents each; 3 for 55 cents; \$2.00 per doz.

GLEAM—Large deep lemon yellow. Medium height. Matures Dec. 5th.

20 cents each; 3 for 55 cents; \$2.00 per doz.

MARITZA—Large yellow with full yellow cushion. Good stem and foliage. Tall. Matures Nov. 5th.

MRS. JOHN SHIELDS—Large. Deep yellow throughout. Medium height. Matures Oct. 20th.

20 cents each; 3 for 55 cents; \$2.00 per doz.

NEW GOLD—Brilliant yellow with high perpendicular yellow cushion. Tall. Sturdy growth.

TUXEDO—An exceptionally large, light pink with wide sharply pointed ray petals radiating from a flat disc of quilled florets of slightly darker shade. We can unreservedly recommend this variety as one of the most outstanding specimens of the anemone type. Tall. Matures Nov. 1st.

25 cents each; 3 for 70 cents; \$2.50 per doz

RED

RED ROLINDA—Red with red cushion. Intermediate. Medium height. Matures Dec. 15th.

20 cents each; 3 for 55 cents; \$2.00 per doz.

THE TITAN—Scarlet crimson with bronze red cushion. Large blooms, stiff stem. Tall. Matures Nov. 5th. (See illustration page 26.)

WHITE

MARIE LOUISE—White with white cushion. Medium height. Matures Nov. 1st.

MRS. A. G. WILSON—White with white cushion. Short. Matures Nov. 10th.

20 cents each; 3 for 55 cents; \$2.00 per doz.

SHASTA—A good intermediate. Medium height. Matures Oct. 25th.

SINCERITY—White with high, rounded white cushion. Medium height. Matures Oct. 25th.

SMITH'S PURITY—White with white cushion. Short. Matures Nov. 25th.

SORONA—White; small yellow cushion. Medium height. Matures Oct. 15th.

SULPHUR FRILL—Cream white petals with yellow cushion. Tall. Matures Nov. 5th.

SWAN—Large beautiful white. An outstanding bloom. Tall. Matures Dec. 10th.

25 cents each; 3 for 70 cents; \$2.50 per doz.

WHITE ANEMONE—Good intermediate white. Medium height. Matures Nov. 1st.

YELLOW

Matures Nov. 1st. (See full color illustration page 25.)

20 cents each; 3 for 55 cents; \$2.00 per doz.

SUNBRITE—Yellow throughout. Medium height. Matures Dec. 1st.

25 cents each; 3 for 70 cents; \$2.50 per doz.

SUZANNE MILLER—Bright yellow with yellow cushion. Tall. Matures Oct. 20th.

TRIUMPH—Deep canary yellow with large canary yellow cushion. Medium height. Matures Nov. 1st.

20 cents each; 3 for 55 cents; \$2.00 per doz.

YELLOW ESTRELLITA—Large and very full. Petals and cushion deep yellow. Tall. Matures Nov. 10th.

20 cents each; 3 for 55 cents; \$2.00 per doz.

YELLOW SINCERITY—Sport from Sincerity. Same in all respects except color.

50 cents each; \$5.00 per doz.

YELLOW SUPREME—Yellow with small yellow cushion. Tall. Matures Nov. 30th.

20 cents each; 3 for 55 cents; \$2.00 per doz.

Ichimonji or Horizontal-Efflorescent Varieties

(Broad Petaled Single Types)

These varieties have very large, broad petals having the appearance of large single type dahlias. Common with all singles, the colors very distinct and bright for these varieties. If the soil is rich, do not feed them heavily. Ex-

cellent in sprays or when disbudded. Very effectively used for floral arrangements. Grows to about four feet tall and blossoms October 25th on.



SHIHODEN "Ichimonji Type"

BUTTERCUP—Cream white. Large. Good foliage and stem. **50 cents each.**

CARMEN—Brilliant red with soft old gold reverse. Attains good size. Unusually rigid stem. Vivid green foliage leaves of which have sharply pointed holly-like serrations. Medium height. Matures Nov. 25th. **\$1.00 each.**

EVA—Golden yellow spotted with bright red. **75 cents each.**

FUYO NO MINE—Good clear white. Attains good size. **35 cents each.**

GOKOKU NO KAMI—Bronze. **35 cents each.**

OHGON NO HIKARI—Very brilliant yellow. Large. **35 cents each.**

SHIHODEN—Pink with broad petals. Medium height. Matures Oct. 25th. (See illustration.) **75 cents each.**



Single Varieties — Daisy Type



WHITE MENSA

BRONZE

PRICE OF ROOTED CUTTINGS

(Unless Quoted Otherwise)

Each	\$.15
3 of One Name40
12 of One Name	1.50

ALOMA—Terra Cotta bronze with yellow center. Medium height. Matures Oct. 15th.

DAWN—Large chestnut bronze. Tall. Matures Dec. 10th.

ESTHER RUTH—A good intermediate, color of which is a soft delicate bronze. Medium height. Matures Dec. 15th.

FIESTA—Beautiful reddish-bronze. Very large and of striking appearance. Medium height. Matures Nov. 5th.

25 cents each; 3 for 70 cents; \$2.50 per doz.

GOLDEN GLEAM—Large golden bronze. Medium height. Matures Dec. 15th.

HASEGAWA JOSEPHINE—A deep chestnut bronze. Tall. Matures Nov. 25th.

HASEGAWA MINORU—Good late bronze. Large size. Tall. Matures Nov. 25th.

H. M. TOTTY—Good bronze. Large. Medium height. Matures Nov. 5th.

IDA SKIFF—Amber bronze. Short. Matures Nov. 1st.

KRAMER'S BUFF ORANGE—Orange buff. Excellent sprays. Three-inch blooms. Tall. Matures Nov. 15th.

MELBA—Orange bronze. Semi-double, 4 to 5 inches in diameter. Medium height. Matures Nov. 5th.

METER BERGEN—Medium shade of bronze. Intermediate. Medium height. Matures Nov. 5th.

MRS. LOU RIVERS—Good intermediate bronze. Medium height. Matures Nov. 15th.

ORCADIA—Buff orange. Double row of ray petals. Medium height. (See illustration page 32.)

25 cents each; 3 for 70 cents; \$2.50 per doz.

SANTA ANITA—Good large bronze. Medium height. Matures Nov. 10th.

PINK

ANNABEL—Salmon pink. Matures Nov. 5th.

APRICOT VALENCIA—Sport from Valencia. Beautiful shade of apricot. Tall. Matures Nov. 15th. **35 cents each; \$4.00 per doz.**

BIJO—Pleasing shade of rose pink. Intermediate. Medium height. Matures Oct. 25th.

CALIFORNIA PEACH—Deep rose with white edging. Intermediate. Medium height. Matures Oct. 5th.

DARK PINK VALENCIA—Same as Valencia in all respects except color which is a much deeper pink. Tall. Matures Nov. 15th.

DEBUTANTE—Very large deep pink of unusual beauty. One of the best of the single variety. Tall. Matures Dec. 15th.

ELIZABETH FIRESTONE—Pink. Medium height. Matures Nov. 15th.

FAITHFUL—Large light pink of exceptional beauty. Tall. Matures Dec. 15th.

HASEGAWA PINK—Excellent bright pink of medium size. Medium height. Matures Nov. 20th.

MARGARET LAESSOR—Beautiful shade of soft pink. Medium height. Matures Oct. 10th. **25 cents each; 3 for 70 cents; \$2.50 per doz.**

MARIE ANDERSON—Bright rose. Medium sized blooms. Tall. Matures Dec. 10th.

MRS. E. D. GODFREY—Good shell pink. Large blooms. Best disbudded. Tall. Matures Nov. 20th.

MRS. WILLIAM H. BUCKINGHAM—Pink. Short. Matures Nov. 5th.

PINK PRIDE—Deep pink. Bloom has fine texture and very large when disbudded. Medium height. Matures Nov. 20th.

VALENCIA—Most charming shade of orchid pink, a strikingly beautiful bloom. Tall. Matures Nov. 15th.

WOBURN—Pink. Tall. Matures Nov. 15th.

RED



DR. PHILIP S. DOANE

CALIFORNIA RED DAISY—An intermediate brilliant red with good stem and foliage. Medium height. Matures Oct. 5th.

CRIMSON MONARCH—Large semi-double. An outstanding late bloom. Tall. Matures Dec. 5th.

D. BAKER—Large red with good stem and foliage. Medium height. Matures Oct. 15th.

DR. PHILIP S. DOANE—A deep wine red with pinkish-silvery reverse. Very large. When disbudded will attain a diameter of 8 inches. Tall. Matures Nov. 1st. (See illustration above.)

35 cents each; 3 for \$1.00; \$3.50 per doz.

HASEGAWA POINSETTIA—Brilliant red. Excellent sprays. Three-inch blooms. Tall. Matures Nov. 15th.

IMPROVED GRENADIER—Brilliant red of striking beauty. Large. Tall. Matures Oct. 25th.

LADY ASTOR—Bright crimson. Medium height. Matures Nov. 25th.

LIGHTHOUSE—Red single with good sprays bearing large flowers. Equally suitable as a garden plant or for cascading. Tall. Matures Oct. 15th.

LOUIS FRIED—An outstanding bloom of a brilliant red. Petals are long and tubular terminating in long open tips. Tall. Matures Nov. 10th. **50 cents each; \$5.00 per doz.**

MARIE KRAMER—Good red. Intermediate. Medium height. Matures Dec. 10th.

RADIANT—Bright red. A true daisy type 3 inches in diameter. Medium height. Matures Nov. 5th.

RED MELBA—Red. Semi-double 4 to 5 inches in diameter. Medium height. Matures Nov. 5th.

RED ROVER—Very charming combination of red and gold. Large. Medium height. Matures Nov. 10th.

SCARLET BEAUTY—Deep red. Small. Medium height. Matures Dec. 10th.

TAGOYA—Brilliant goya red. Semi-double. Short. Matures Nov. 1st.

WHITE

CHRISTMAS WHITE—Intermediate white with yellow button center. Double row of ray petals. Tall. Matures Dec. 15th.

20 cents each; 3 for 55 cents; \$2.00 per doz.

GLADYS DUCKHAM—Large pure white single with double row of flat, pointed petals. A very good keeper. Excellent stem and foliage. Medium height. Matures Nov. 20th.

JEAN—Pure white. Medium height. Matures Nov. 1st.

MABEL SEYMOUR—Pure white. Matures Nov. 5th.

MORI WHITE—An exceptionally fine clear white single and very large when disbudded.

Medium height. Matures Nov. 15th.

MRS. JAS. S. KELLY—Ivory white. Large. Medium height. Matures Nov. 15th.

MYERS WHITE—Good clear white. Large. Tall. Matures Dec. 15th.

PROFESSOR BALL—This is an exceptionally fine white single. Large. Medium height. Matures Nov. 15th.

SILVER EMBLEM—Good early white. Small. Medium height. Matures Oct. 15th.

WHITE MENSA—Large white with yellow button in the center. Resembles Shasta Daisy. Medium height. Matures Nov. 10th. (See illustration page 29.)

YELLOW

CALIFORNIA YELLOW DAISY—Good clear yellow intermediate type. Medium height. Matures Oct. 5th.

GOLDEN MENSA—Large golden single, similar in appearance to a Shasta Daisy. Same as White Mensa in all respects except color. Medium height. Matures Nov. 10th. (See illustration page 29.)

GOLDEN SEAL—Deep golden yellow. Short. Matures Nov. 25th.

GRETCHEN PIPER—Yellow. Medium height. Matures Oct. 25th.

MORI APRICOT—Soft apricot shade of yellow. Large and when disbudded is a most beautiful bloom. Medium height. Matures Oct. 25th.

SUNBURST—Deep rich yellow. Large. Medium height. Matures Dec. 20th.

Hardy Varieties

These varieties are especially recommended for regions where early frosts prevail, as they possess hardy, early flowering qualities. Blooming dates, September 15 to October 20.

PRICE OF ROOTED CUTTINGS

(Unless Quoted Otherwise)

Each	\$.15
3 of One Name40
12 of One Name	1.50

AGNES SELKIRK CLARK—Apricot salmon. Small single. Medium height. Matures Oct. 15th.

ALBERT MULLER—Apricot suffused with pink. Medium height. Decorative. Matures Oct. 1st.

AUTUMN LIGHTS—A very striking coppery bronze of unusual beauty. Semi-double. Matures Oct. 15th.

20 cents each; 3 for 55 cents; \$2.00 per doz.

BURGUNDY—Cerise crimson. Double. Matures Oct. 1st.

CAVALIER—Rich vermilion-red single. Medium height. Matures Oct. 15th.

DAPHNE—Daphne pink shading to lilac rose. Tall. Matures Oct. 15th.

EDEN—Rose-pink. Short. Decorative. Matures Oct. 1st.

EMBER—A very beautiful coral and orange bronze. Fully double. Matures Oct. 15th.

EUGENE A. WANDER—Golden yellow. Decorative. Matures Sept. 15th.

35 cents each; 3 for \$1.00; \$3.50 per doz.

GANNA—A bright pink decorative. Fully double. Bushy growth. Medium height. Matures Oct. 10th.

GOBLIN—Golden bronze decorative pompon. Vigorous and symmetrical in manner of growth. Extremely hardy. Short. Matures Oct. 1st.

GRANNY SCOVILLE—Warm coral bronze. Flowers fully double and unusually large. A short, bushy, symmetrical plant. Matures Oct. 10th.

HEBE—Luminous pink. Medium sized blooms. Medium height. Matures Oct. 5th.

HEE—Red single. 1½ inches in diameter. Matures very early.

HU—Light yellow bronze single. 1½ inches in diameter. Matures Oct. 1st.

INDIAN SUMMER—Bronze single. Medium height. Matures Oct. 25th.

INNOCENCE—White single. Short. Matures Sept. 20th.

JEAN TREADWAY—Pink with dark center. Medium height. Decorative. Matures Oct. 10th.

JUHICH—Salmon pink single. Matures Oct. 1st.

KING MIDAS—Yellow decorative. Medium height. Matures Sept. 30th.

LAVENDER LADY—A true lavender flower devoid of all trace of mauve, purple or magenta. It is an unusually clean cut and attractive specimen attaining an incomparable lavender hue when mature. Each individual bloom is 3 inches in diameter and fully double. Is unusually hardy and is in full bloom by Oct. 5th. Medium height.

25 cents each; 3 for 70 cents; \$2.50 per doz.

LORELEI—Yellow. Medium height. Decorative. Matures Sept. 10th.

MANDARIN—Coral salmon shading to coppery bronze, radiating a luminous iridescence. Short. Matures Oct. 15th.

20 cents each; 3 for 55 cents; \$2.00 per doz.

MARS—Wine red single. Medium height. Matures Oct. 15th.

MIE—Wine red single. Two inches in diameter. Matures Oct. 1st.

MRS. PIERRE S. DU PONT, III—A rosy, salmon-pink combined with bronzy tan and iridescent gold tints. Fully double and of unusual size. A vigorous grower. Matures Oct. 5th.

50 cents each; \$5.00 per doz.

NANA—Splendid yellow single. Two inches in diameter. Matures Oct. 5th.

NISAN—Bronze single. Matures Oct. 1st.

PINK LUSTRE—Orchid pink single. Matures Sept. 25th.

RED FLARE—Bright red pompon type. Short. Matures Oct. 15th.

R. MARION HATTON—A canary yellow decorative pompon of medium height. Same as Ruth Hatton in all respects except color. Matures Oct. 10th.

ROMANY—Reddish-bronze decorative. Medium height. Matures Oct. 5th.

ROSE GLOW—Raspberry rose. Double. Matures Sept. 25th.

ROSY GEM—A bright rose pink decorative. Medium height. Matures Oct. 15th.

RUTH CUMMINGS—Reddish-bronze. Decorative. Medium height. Matures Oct. 10th.

SALADIN—Coral red. Semi-double. Matures Oct. 1st.

SANGO—Salmon pink single. Matures Sept. 25th.

SANKU—Good bronze single. Matures Sept. 25th.

SATURN—Bronze single. Medium height. Matures Oct. 15th.

SEPTEMBER QUEEN—White short decorative. Matures Sept. 15th.

SYMPHONY—A Korean Hybrid that in truth is a symphony in color. A blend of mauve, coppery pink and soft lavender. Strong vigorous growth. Flowers very large, fully double. Excellent stems and foliage. Medium height. Matures Oct. 10th.

25 cents each; 3 for 70 cents; \$2.50 per doz.

THE MOOR—Wine red. Double. Matures Oct. 1st.

VULCAN—Bronze crimson single. Medium height. Matures Oct. 15th.

WOLVERINE—A yellow decorative. Good sized blooms. Medium height. Matures Sept. 15th.

YO—Excellent pink. Single of good size. Matures Oct. 10th.



ORCADIA

(See page 29 for description)

Cascade Varieties

New Introductions from Blanchard Gardens Seedlings

PRICE OF ROOTED CUTTINGS

(Unless Quoted Otherwise)

Each	\$.20
3 of One Name.....	.55
12 of One Name.....	2.00

ABUNDANCE—A reddish-bronze anemone with tubular petals and spoon tips. Very prolific. Blooms 1½ inches in diameter.

ALLURE—Delicate orchid anemone. High round yellow cushion. Blooms 1 inch in diameter.

BETTINA—Dark pink single. Blooms 1½ inches in diameter.

BREAKING DAWN—Light pink anemone having tubular petals with spoon tips. Blooms 1¼ inches in diameter.

BURNING EMBER—Bright red anemone with high rounded yellow cushion. Blooms 1 inch in diameter.

CHINOOK—Salmon pink single. Blooms 2 inches in diameter.

DAIRY MAID—Cream colored anemone with double row of petals. Yellow cushion. Blooms 1½ inches in diameter.

EXQUISITE—A delicate lavender baby button anemone with yellow cushion. Has double row of ray petals. Could be no more aptly named.

FLAME—Bright red anemone with yellow cushion. Blooms 1½ inches in diameter.

GOOD EARTH—Light terra cotta bronze anemone with tubular petals and spoon tips. Yellow cushion. Blooms 1¼ inches in diameter.

AGAPPINA—Reddish-bronze anemone with yellow cushion. Blooms 2 inches in diameter.

AKEBONO—A good orange yellow. Single. Medium size.

25 cents each; 3 for 70 cents; \$2.50 per doz.

ALOHA—An anemone type of a very pleasing shade of bronze. Large cushion. Good late variety.

25 cents each; 3 for 70 cents; \$2.50 per doz.

ANNA—Pure white single with a golden yellow center. Blooms 2 inches in diameter. Very tall and a rank grower.

BABY ANNE—Pure white button anemone. Very small. Good grower.

25 cents each; 3 for 70 cents; \$2.50 per doz.

CHUSHIN—Striking red ray petals radiating from a yellow center. Very good bloomer.

25 cents each; 3 for 70 cents; \$2.50 per doz.

HELIOTROPE—Deep lavender anemone. Large, high, well rounded reddish-bronze cushion. Short ray petals.

25 cents each; 3 for 70 cents; \$2.50 per doz.

LAVENDER VEIL—Light lavender anemone with prominent high, well rounded, lavender cushion. Blooms 1½ inches in diameter.

25 cents each; 3 for 70 cents; \$2.50 per doz.

MIDGET—Diminutive lavender pink anemone yellow cushion. Blooms ¾ inch in diameter.

ORCHID DREAM—An orchid pink anemone with yellow cushion. Blooms 1½ inches in diameter.

RHAPSODY—A very delicate lavender anemone button. Has a high rounded cream cushion shading to orchid. Short ray petals. Blooms 1 inch in diameter.

25 cents each; 3 for 70 cents; \$2.50 per doz.

ROYAL ROBE—Purple anemone with yellow cushion. Blooms 1½ inches in diameter.

SNOWBOUND—White anemone with tubular spoon tip petals. Has well rounded yellow cushion. Blooms 1¼ inches in diameter.

SNOWFLAKE—A pure white single. One inch in diameter.

TOKALON—Wine red anemone with yellow cushion. Blooms 1 inch in diameter.

TORTOISE SHELL—Amber bronze anemone with golden bronze cushion. Has double row of ray petals.

WEE SPARK—A diminutive crimson anemone with well rounded yellow cushion. Blooms 1 inch in diameter.

COMET—Good small cream anemone type. Very full bloomer.

15 cents each; 3 for 40 cents; \$1.50 per doz.

DORA—An early yellow single of unusual merit. Good foliage.

25 cents each; 3 for 70 cents; \$2.50 per doz.

EARLY YELLOW—An extremely early blooming yellow single. Blooms 2 inches in diameter.

EASTERN STAR—A lavender anemone. Has quilled petals with spoon tips. Yellow cushion. Blooms 3 inches in diameter.

EVENING STAR—An outstanding brilliant yellow anemone type. Cushion deep golden.

15 cents each; 3 for 40 cents; \$1.50 per doz.

FIREFALL—Garnet red single. Blooms 2 inches in diameter. A free bloomer of striking beauty.

15 cents each; 3 for 40 cents; \$1.50 per doz.

Previous Introductions



JANE HARTE

HALLOWEEN—A charming shade of bronze. Anemone type of good size.

HELENA—Good lavender single.

ICHNEN—Golden baby anemone with prominent golden cushion. Blooms $\frac{3}{4}$ -inch in diameter.

JANE HARTE—Yellow sport from Anna. Same in all respects except color. (See illustration above.)

KASACHI—A pure white single. Has quilled petals with open ends. A distinct novelty.

KINRO—Yellow anemone. Has single row of lemon colored petals radiating from a raised, well rounded golden bronze cushion. Blooms $1\frac{1}{2}$ inches in diameter.

KINSEN—A red anemone with double row of petals. Yellow cushion. Blooms one inch in diameter.

KOKO—A reddish-bronze anemone with a double row of ray petals surrounding a high, well rounded golden bronze cushion. An exceedingly beautiful bloom $1\frac{1}{2}$ inches in diameter.

KOTO—Yellow anemone type having tubular petals with spoon tips.

KOYEN—A yellow anemone with single row of semi-tubular petals; spoon tips.

LAVENDER MIST—Good lavender anemone type. Has well rounded cushion with double row of ray petals. Splendid grower and easily trained.

LILAC VEIL—Purple anemone type. Easy to grow and train. An outstanding number.

MARIAN—Beautiful anemone type with petals radiating from a soft yellow cushion.

25 cents each; 3 for 70 cents; \$2.50 per doz.

MEIYO—Golden yellow tubular petals terminating in open spoon tips. An outstanding late bloomer.

MOONLIGHT—Yellow in color, with tubular petals. Good grower.

ONAI—A pale lavender anemone with prominent golden cushion. Blooms $1\frac{1}{2}$ inches in diameter.

ORION—Spoon end petals of a beautiful reddish-bronze radiating from a yellow button center. Very prolific bloomer and is of unusual merit.

25 cents each; 3 for 70 cents; \$2.50 per doz.

POINT LOMA—Deep pink single. Good bloomer. 25 cents each; 3 for 70 cents; \$2.50 per doz.

PURPLE QUEEN—A deep purple with purple cushion, the florets of which are well opened and display a deeper purple interior. Tips are tinged with a faint trace of golden bronze. Very tall and vigorous grower. Blooms $2\frac{1}{2}$ inches in diameter.

RAINBOW FALLS—Lavender pink anemone type. An excellent bloom. Good size and shape. 25 cents each; 3 for 70 cents; \$2.50 per doz.

RED BRICK—A brick dust red anemone. One inch in diameter with well rounded cushion of same color. Very striking.

25 cents each; 3 for 70 cents; \$2.50 per doz.

SEISO—Light purple in color. Anemone type. Good.

25 cents each; 3 for 70 cents; \$2.50 per doz.

SHIRAHA—White anemone with widely spaced quilled petals open at the tip. Has well formed lemon yellow cushion. Novel in appearance. Blooms 1 inch in diameter.

SHIRLEY—A charming yellow with tubular petals terminating in spoon tips. Very beautiful in its graceful manner of cascading.

SONORA—Anemone type bloom of a very pleasing lavender shade.

25 cents each; 3 for 70 cents; \$2.50 per doz.

SUROKU—An anemone type with double row of pure white petals. Has a prominent, well rounded soft yellow cushion. One of our best. Blooms $1\frac{1}{2}$ inches in diameter.

TENSEI—This is an outstanding bloom of a delicate soft pink shade. The petals are tubular with spoon tips. Most charming in its entirety.

VIOLET RAY—Purple anemone type. Blooms large and very full.

25 cents each; 3 for 70 cents; \$2.50 per doz.

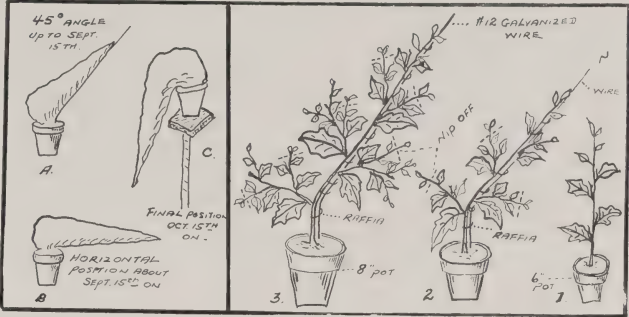
YAMABUKI—Bright yellow anemone with golden yellow cushion. Very outstanding. Blooms $1\frac{1}{2}$ inches in diameter.

Suggestions for Culture of Cascades

The Cascade varieties are all of exceptional beauty and exquisite daintiness. While chosen primarily for the ease with which they may be trained to hang or "cascade" downward, there are numerous ways in which they may be made to yield equally gratifying results with a minimum expenditure of time and effort.

Planted in the garden and stopped a number of times in the usual manner, these little-heralded horticultural phenomena will develop a rugged bushiness of free flowering growth that for sheer beauty may, perchance, outrival the much vaunted glory of the larger and more pretentious of their brethren.

Grown in pots and without special training, they may such time as it is desirable to transfer them indoors, where their presence may lend a bit of sunshine might be a colorless interior. Let



dark shadows and crispness of air be brightened and warmed by the comforting cheer radiating from one or more well-groomed plants of this type strategically placed on window ledge, bench or table.



Tying and Pinching (see drawings and photos)

TYING AND PINCHING (See drawings and photos above). When the plant grows to about 12 inches tall (drawing No. 1) it is bent from about the middle and the end tied to a fairly long No. 12 size galvanized wire which is bent at an angle of 45 degrees (as in Fig. 2). The supporting wire should point to north and the leader must be tied to it with raffia (Figs. 2 and 3) at least every seven days. All the laterals and the sub-laterals should be pinched at every second or third joints as in Fig. 2, and this operation should be repeated continuously as they grow until around September 15th. As the plant increases in width an additional support is necessary to prevent toppling over on one side as in Fig. 4. The main leader is lowered gradually so that it will be in the horizontal position around September 15 as in Fig. B. When the buds begin to form the main stem starts the gradual vertical bending from its horizontal level with the surface of the plant now facing south as in Picture 5. When the buds show color, the pot is placed on high position so that the sprays will not touch the ground and bent to the final vertical position (as in Fig. C. Also see cut for Jane Harte).

PREPARATION OF SOIL. Prepare the compost by mixing well three-fifths by volume of medium heavy

loam and the balance two-fifths of leaf mold and well decayed cattle manure (proportion of two-thirds leaf mold and one-third manure). In addition to this a 5-inch pottful of bone-meal may be added to every three bushels of this soil. This compost may be prepared in large quantity and can be stored in shelter for later use.

FERTILIZER. Twice a month applications of commercial fertilizers (Gaviola, Vigoro, etc.) should be made during the growing months starting from early June up to the formation of their buds. The amount of fertilizer to be used depends largely upon the size of the plant. It is cautioned not to over-feed the plant, always remembering that very light applications frequently made are far better than over-dosing the plant at any single application.

RE-POTTING. The plants should be shifted into 6-inch pots when bought from us in little pots. Further two to three shiftings into larger pots are required during the season, and these shifts should be made before the plants form their first root network on the inside of the pot. The final potting may be made about the middle of August and the sizes of pots used depends on the size and variety.

POT PLANT TYPES

The following pot plant varieties are also recommended for border plantings because of their dwarf growing and free branching qualities.

PRICE OF ROOTED CUTTINGS (Unless Quoted Otherwise)

Each	\$.15
3 of One Name40
12 of One Name	1.50

***AMELIA (Pink Cushion)**—A dwarf specie. Fully double and suitable for home garden use, potting or landscape work. When planted early it will attain a bushiness of growth not to be exceeded by its height. Under favorable conditions blooms will develop in June and continue until frost. Short. Matures August.

ASTRID—Delicate pink single. Has very beautiful foliage. Very short. Mature early.

***BRONZE CUSHION**—Same as Amelia in all respects save color which is a coppery bronze. Short. Matures August.

CINCINNATI—Golden yellow large pompon. Best when disbudded. Short. Matures Oct. 20th.
20 cents each; 3 for 55 cents; \$2.00 per doz.

***GOLDEN CUSHION**—Same as Amelia in all respects save color, which is a deep yellow. Short. Matures August.

KUZUKA—Light pink intermediate pompon. Short. Matures Oct. 10th.

Those noted with asterisks (*) will commence blooming in July or August up until the approach of frosts.

POMPONETTE—Small yellow pompon. Very short grower. Matures Sept. 25th.

***PURPLE CUSHION**—Same as Amelia in all respects save color, which is a deep purple. Matures Aug.

QUEEN OF PINKS (Pink Mandel)—Beautiful shade of pink. Large pompon which is best disbudded. Short. Matures Nov. 10th.
20 cents each; 3 for 55 cents; \$2.00 per doz.

RICHARD MANDEL—Pure white large pompon. Best when disbudded. Short. Matures Nov. 10th.
20 cents each; 3 for 55 cents; \$2.00 per doz.

ROYAL RED—A deep red pompon of the button type. Short. Matures Oct. 25th.

SONIA—A very dark wine red button pompon. Short. Matures Oct. 15th.

***WHITE CUSHION**—Same as Amelia in all respects save color, which is white. Short. Matures August.

YELLOW BEAUTY—Golden yellow large pompon. Best when disbudded. Short. Matures Nov. 10th.
20 cents each; 3 for 55 cents; \$2.00 per doz.

CULTURE FOR POT PLANTS

Pot growing of chrysanthemums should be encouraged in several states where early freezing conditions prevail. When they are pot-grown, they can be easily removed into shelter when the hazards of freezing, wind, and rain occur. Again, especially when the growing ground is limited in the garden, potted plants may find place on the side of walks, on edges of steps or in porches if one-half day sunshine is available. Mostly all the chrysanthemums of our fall displays are grown in pots. This practice is carried by us because old flowers are being removed constantly as the season progresses. Our display ranges from single flowering exhibition flower to 500-blossoms specimen plant in single container.

Fresh cuttings are potted immediately into 5- or 6-inch pots around May 15th. Plants should not be allowed to become pot-bound before shifting into larger pots.

Other culture being similar to those of ground plantings.

Plants may be allowed to bear flowers as follows:

	No. of Stems
EXHIBITION TYPES (when largest blossoms desired)	1
EXHIBITION TYPES (ordinary)	2 or more
COMMERCIAL TYPES	3 or more
SPIDER TYPES	5 or more
DISBUDED ANEMONES, POMPONS, ETC.	6 or more

SMALL BOSSOMING VARIETIES should be pinched several times to form compact bush. Two or more plants may be placed in a pot if large bush is desired. Regarding potting soil, fertilizer, and shifting of pots refer to cascade culture on page 35.



Cultural Suggestions Commercial & Exhibition Types



SOIL PREPARATION. Prepare the beds early by spading in well decayed cattle manure or bone meal working in thoroughly to a depth of 12 to 15 inches. Use peat if the soil is too sandy or too heavy.

FERTILIZING. Few applications of commercial fertilizers such as "Gaviota," "Vigoro" or other complete fertilizers should be used during the summer months. The feeding should be avoided during the periods of extreme heat or when the soil is too dry. Water the soil before applying if it is necessary. It should be stopped when the buds are large enough to make the final selection. Fig. 2 above).

STOPPING. When the plant is established in your garden and when it has developed 2 or 3 pairs of matured leaves, the center or the main growth is nipped off. Then the plant should be restricted to two or three shoots in order to obtain larger blooms. For the late blooming variety, the main growths of these new shoots may be nipped off again around July 15th in order to regulate the height, allowing only the original number of new shoots to rise per stem.

For the large anemones and pompons, allow 6 to 8 growths to a plant. Other cultures for these being similar with those of the larger flowering varieties.

DISBUDDING (see drawing above). Immediately after the new shoots of your selection begin to send out side laterals, they should be removed very close at the base (see lowest lateral of Figure 1) at regular intervals about once a week. The basal shoots should be removed also as they appear. This procedure should be adhered to very religiously in order to obtain successful results.

The first bud produced by the plant is called the "Crown" bud and is distinguished by being surrounded by leaves. The "terminal" bud appears later in clusters surrounded with several flower buds.

The procedure of "taking buds" depends very largely on the variety and no fast rules can be given, but we recommend reserving terminal buds for the majority of the early flowering commercial and exhibition types in Southern California. The safest rule, we find, is not to save buds formed before August 20th in our district. The retention of too early crown buds often results with large percentage of crippled flowers, especially when large amount of nitrogen fertilizer remains in the soil unconsumed by the plant. Again, the hottest period of the year usually comes during the month of September and early October, the hazards of burning of petals and fading of colors are too frequent when early crown is retained in this district.

The final selection of bud should not be made too hastily nor when buds are very small (see Figure 1). It is also advisable to allow an alternate bud (see Figure 2) to remain until one is certain of all defects when final selection is being made (Figure 3).

PESTS. Common pests and diseases are thrips, aphids, leaf-tyers, cut worms, mildews, etc. Plants should be examined frequently and sprayed with proper insecticides as recommended by dealers as soon as they are detected. After September 1st we recommend spraying the plants twice a month until buds begin to show color.

STAKING. Every individual stem should be supported with stake or by other means to hold the blooms upright.

Culture for Bush or Garden Varieties

Under these types are pompons and buttons, anemones, singles and hardy. These varieties are most effective in the gardens when grown low with as much growth as possible. This is obtained by pinching off the center

of all the laterals two or three times up to the 1st or 10th of August. This method will prevent the plants from toppling too freely with minimum support.

INDEX

A	Page	C	Page	F	Page		Page
Abundance	33	Califoral Pride	23	Faith	27	Innocence	32
Adelaide	19	California Beauty	19	Faith Engel	27	Intensity	15
Admiration	26	California Firebird	30	Faithful	30	Irene	19
Adonia	14	California Peach	30	Falon Kirk	11	Iroquois	22
Adorable	18	California Red Daisy	30	Ferdinand	29	Izoric	3
Agapina	33	California Yellow Daisy	31	Fiesta	15	Ivaline	23
Agate	18	Camilla	16	Fire Bird	23		
Agnes S. Clark	31	Campfire	19	Firefall	33	J	
Aiko	14	Capt. Blood	24	Flame	33	Jane Harte	34
Akebono	33	Capt. Cook	27	Florence Miller	3	J. C. Taggarts	9
Alameda	14	Capt. Rival	17	Frieda	26	Jean	31
Albatross	16	Cardonia	27	Friendly Rival	17	Jean Treadway	32
Albert Muller	31	Carmen	28	Fuyo No Mine	28	Jemima	32
Alecia	23	Catherine	28			Jessie	22
Alice Tashima	5	Cavatsda White	19	G		Jessie Powell	15
Allure	33	Cavalier	31	Gallant Knight	5	Jewell	19
Aloha	33	C. D. Wolfe	27	Ganna	31	Joan Wells	22
Aloma	29	Celestra	17	Garnet King	15	Juhich	32
Aloyasia	27	Chas. Howe	9	Garza Supreme	27	Jui Jitsu	9
Amaranthea	19	Chas. Rager	16	G. Konno	9	Julet	12
Ambassador	16	Chattanooga	16	Gladys Duckham	31	Jumbo	3
Amelia	36	Chattanooga Golden	17	Glennview	14	Justrite	14
Angelo	23	Chattanooga Yellow	17	Glenview White	5		
Anna	33	Cheerful	3	Glitters	14	K	
Annabel	30	Cherrio	3	Glow	22	Kaino Bronze	22
Anna Kaskas	14	Chicago Pearl	24	Goblin	31	Kaino Pink	23
Antigo	26	Chinook	33	Gokoku No Kami	28	Kaino Red	22
Antonette Bush	5	Christmas Cheer	19	Golden Arbut	17	Kasachi	34
Appert	11	Christmas Red	19	Golden Beauty	3	Katherine Louise	5
Arbicon	19	Christmas White	31	Golden Charm	22	Kay Tashima	5
Apricot May Wallace	19	Chrysalora	17	Golden Cordova	24	Kegon No Taki	9
Apricot Queen	17	Chushin	33	Golden Cushion	36	Kimie Tashima	10
Apricot Valencia	30	Cincinnati	36	Golden Dream	3	King Midas	32
Arcadia	24	Citrus Queen	27	Golden Fairy	24	Kinsin	34
Arctic	5	Clara Trueman	11	Golden Glean	29	Koko	34
Ariel	16	Clare	18	Golden Glory	17	Koto	34
Armistice Day	15	Clare	18	Golden Harp	17	Koyen	34
Astrid	36	Comet (Cascade)	33	Golden Measure	11	Kramer's Buff Orange	29
Autumn Lights	31	Comet (Com)	17	Golden Mensa	31	Kuzuka	36
Avalon Lights	23	Coral Blaze	25	Golden Mistletoe	17		
Azora	23	Cordova	24	Golden Pockett	11	L	
		Corona	17	Golden Seal	31	Lady Astor	30
B		Country Maiden	11	Golden Snow	22	Lady White	16
Baby	18	Crimson Glow	27	Golden Wedding	17	Lavender Beauty	3
Baby Anne	33	Crimson Monarch	30	Gold Lode	18	Lavender Feather	10
Ball of Gold	24	Crystal Jewell	19	Good Earth	33	Lavender Lady	32
Beautiful Lady	26	Crystal White	24	Gov. Green	15	Lavender Mist	34
Ben Franklin	14			Grace Coolidge	11	Lavender Veil	33
Ben Tashima	11	D		Grace Scullig	11	Letitia	32
Bertha Bronze	5	Daikinka	11	Graf Von Avon	27	Lighthouse	30
Bertha Oliver	3	Dainty Maid	19	Granny Scoville	31	Lilac Veil	34
Bess Witt	5	Dainty White	5	Greta	24	Lillian Foltz	18
Bettina	33	Dairy Maid	33	Gretchen Piper	31	Linda Lou	26
Betty Price	18	Daphne	31	Gwen Patton	14	Little America	27
Beuneta	19	Dark Pink Valencia	30	Gyakuren	5	Lorelei	19
Bejo	30	Dawn	29			Los Angeles	22
Beldine	26	D. Baker	30	Halloween	34	Louisa Pockett	12
Bizarre	25	Debutante	30	Harvard	15	Louis Fried	30
Black Hawk	15	December Queen	17	Hasegawa Josephine	29	Lubabel	26
Blanca	3	Derigid	17	Hasegawa Minoru	29	Lustre	14
Blanche	27	Diana	24	Hasegawa Pink	30	L. W. Wiggs	12
Blazing Gold	17	Dora	33	Hasegawa Poinsettia	30		
Boake Carter	16	Doris Louise	26	Hasegawa Yellow	24	M	
Bobette	18	Dorothy Nehrling	19	Hebe	31	Mabel Seymour	31
Bob White	16	Dorothy Turner	13	Hee	32	Madeline (Jessie)	22
Bonnaffon De Luxe	17	Dr. Enguehard	23	Helena	34	Mandarin	31
Bonnaffon Major	17	Dr. J. M. Inglis	11	Helen Hubbard	22	Margaret Graham	16
Bonnaffon Red	15	Dr. Kirther	16	Helen Newberry	22	Margaret Laessor	30
Bonnaffon Shibuya	17	Dr. Philip S. Doane	30	Hesgawa	33	Martha	6
Bonibel	19	Dr. W. R. Pettit	23	Henry E. Trueman	11	Margaret Lewis	31
Bonnie Mayo	19			Henry Woolman	11	Marian	34
Bronze Tuxedo	25	E		Heritage	22	Mariana	24
Breaking Dawn	33	Earli-White	19	Her Majesty	3	Marie Anderson	30
Bright Spot	18	Early Yellow	33	Hilda Bergen	14	Marie Kramer	30
Bristolite	24	Elizabeth Arden	11	Hilo	12	Marie Louise	27
Bronze Charm	25	Elizabeth Firestone	31	H. M. Ballough	26	Marie Tashima	27
Bronze Chief	5	Ember	31	H. M. Toffy	26	Maritz	6
Bronze Cushion	36	Esther Ruth	29	Honolulu	5	Marketeer	16
Bronze Doty	24	Estrelita	26	H. R. M. Duke of Kent	12	Mars	32
Bronze Frick	24	Ethel	19	Hu	32	Mary L. Hall	24
Bronze Gem	14	Eugene A. Wander	31			Masaka	24
Bronze Lode	14	Eva	28	I		Masterpiece	23
Bronze Masterpiece	23	Evening Star	33	Ichna	34	May Fallace	34
Bronze Norma	25	Exquisite	33	Ida Skiff	29	Meiyo	34
Bronze Perfection	18			Ilo	16	Melba	29
Bronze Supreme	25			Ilona	23	Memories	22
Bronze Tuxedo	25			Imp. Grenadier	30	Meter Bergen	29
Brown Button	18			Indianapolis Pink	14	Midget	33
Bunbu	5			Indian Chief	14	Mie	32
Burgundy	31			Indianola	14	Mignonette	10
Burning Ember	33			Indian Summer	32	Mikado	12
Buto	14						
Buttercup	28						
Butterfly	5						

Millo Astel	22
Mima Garson	14
Miss Flora Bowers	16
Miss Frances Lowe	12
Miss Helen Frick	14
Miss Hilda Hayward	12
Mitsuko	6
Mity Nice	15
Mohawk Chief	15
Monrovia	18
Montecito	10
Monument	17
Moonlight	34
Mori Apricot	31
Mori White	31
Mother of Pearl	22
Mr. Allen	12
Mrs. A. G. Wilson	27
Mrs. B. D. Spillman	12
Mrs. E. D. Godfrey	30
Mrs. G. G. Mason	12
Mrs. Jas. S. Kelly	31
Mrs. Jerry Craig	6
Mrs. J. S. Roberts	26
Mrs. John Shields	29
Mrs. Lou Rivers	29
Mrs. Margaret Donohue	6
Mrs. Mary Hooker	24
Mrs. Nellie Klaris	32
Mrs. Pierre S. DuPont	32
Mrs. Wm. H. Buckingham	30
Mrs. Wm. Thaw, Jr.	18
Murillo	15
Myers White	31

N

Nagirroc	12
Nana	32
Natoma	22
New Gold	27
New York	27
Nisan	32
Niza	22
Norine	19
Norma	26
November Bronze	23
November Glow	22
November Yellow	24
Nuggets	19

O

Oakleaf	14
October Maple	6
October Snow	19
Ohgon No Hikari	18
Ohgon No Sato	28
Ohkwan	6
Ojai	3
Olivia	23
Onai	34
Orcadia	29
Orchid Beauty	26
Orchid Delight	6
Orchid Dream	33
Orchid Queen	15
Orana	3
Oriental	6
Orion	34
Ottawa	19
Ourray	22

P

Pali	23
Pasadena	22
Pasadena Post	15
Pauline	10
Paul Miller	3
Pawnee Chief	23
Peggy Ann Hoover	6
Persian Rose	19
Peter John	15
Philip Kay	15
Pink Chief	15
Pink Delight	15
Pink Dot	22
Pink Exquisite	10
Pink Lustre	32
Pink Mistletoe	15
Pink Pride	30
Pink Supreme	26
Pink Velvet	6
Point Loma	34

Pomponette	36
Pride of Sunnyslope	6
Professor Ball	31
Prosperity Pom	23
Punch Bowl	3
Purple Cushion	36
Purple Frost	10
Purple Queen	34
Purple Spider	7

Q

Quaker Lady	15
Queen of Pinks	36

R

Radiant	30
Rainbow Falls	34
Rayon	7
Red Brick	34
Red Doty	24
Red Flare	32
Red Melba	30
Red Rolinda	27
Red Rover	30
Red Spider	7
Reverie	4
Rhapsody	33
Richard Mandel	36
R. Marion Hatton	32
Robt. Bacon	10
Robt. Henderson	19
Robin Hood	22
Rodell, Imp.	22
Roman Bronze	22
Romany	32
Romola	23
Romolus	12
Rose Charm	23
Rose Cochard	15
Rose Glow	32
Rose Madder	27
Roseum	15
Rosy Gem	32
Royal Crimson	24
Royal Queen	24
Royal Red	36
Royal Robe	33
Rustic	26
Ruth Cummings	32

S

Saladin	32
San Antonio	23
San Gabriel	7
Sango	32
Sanku	32
San Marino	7
Santa Anita	29
Saturn	32
Scarlet Beauty	30
Secretary Nehrling	18
Seijin	7
Seiso	34

September Queen	32
Shasta	27
Shihoden	28
Shiraha	34
Shirley	34
Silver Ball	24
Silver Drops	7
Silver Emblem	31
Silver Lace	7
Sincerity	27
Smith's Purity	27
Snow	22
Snowbound	33
Snowflake	33
Snow White	17
Sonia	36
Sonny's Beauty	8
Sorona	27
Sonora	34
Souvenir	8
Stately White	17
Stromness	17
Sue Sally Jones	8
Sulphur Frill	27
Sunbrite	31
Sunburst	31
Sunglow	18
Sun Gold	18
Sunnyslope Bronze	14
Sunnyslope Gold	18
Sunnyslope White	17
Sunsy	22
Sunspot	4
Suroku	34
Suzanne Miller	27
Swan	27
Swansdown	4
Sylvia	4
Symphony	32

T

Taggarts, Bronze	9
Taggarts, Yellow	10
Tagoya	30
Tensei	34
Thanksgiving Pink	15
The Moor	30
The Pilot	15
The Titan	27
Thos. W. Pockett	12
Thos. W. Pockett, Imp.	12
Thyra	23
Tokalon	33
Tonquin	22
Tortoise Shell	33
Touchdown	24
Tranquility	8
Treasure Gold	22
Treasure Island Pink	23
Triumph	27
Turner, Bronze	12
Turner, Pink	12
Turner, Yellow	12
Tuxedo	27

U

Unalga	24
Unique	8
Usona	23

V

Valencia	30
Venus	17
Vibrant	22
Violet Ray	34
Virgin	4
Virginia	4
Vivian	19
Vulcan	32

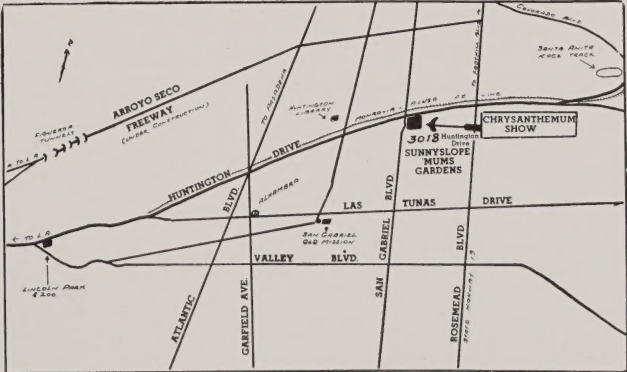
W

Waikiki	4
Wee Spark	33
White Anemone	27
White Cushion	36
White Doty	24
White Frill	8
Whitehall	4
White Helen Frick	17
White Lady	4
White Mensa	31
White Pearl	22
White Points	4
White Rayonnant	8
White Tonquin	22
White Treasure Island	24
Wildfire	23
Wm. McCabe	8
Wm. Turner	12
Wm. Wardman	13
Winterest	22
Woburn	30
Wolverine	32

Y

Yamabuki	34
Yellow Arcadia	24
Yellow Aster	24
Yellow Beauty	36
Yellow Dot	22
Yellow Doty, Imp.	24
Yellow Estrelita	27
Yellow Felt	24
Yellow Glow	24
Yellow Matchsticks	10
Yellow Monument	18
Yellow New York	19
Yellow Pickett	13
Yellow Sincerity	27
Yellow Supreme	27
Yellow Taggarts	10
Yo	32
Yoki Improved	10
Yolanda	26
Yomei	10

HOW TO REACH SUNNY SLOPE MUM GARDEN





PHILIP KAY (See Page 15)

Plants Ready for Delivery April to July

SUNNY SLOPE 'MUM GARDENS

Operated by

BLANCHARD 'MUM GARDENS

Telephone ATLantic 2-1364

3018 Huntington Drive

San Gabriel, California